

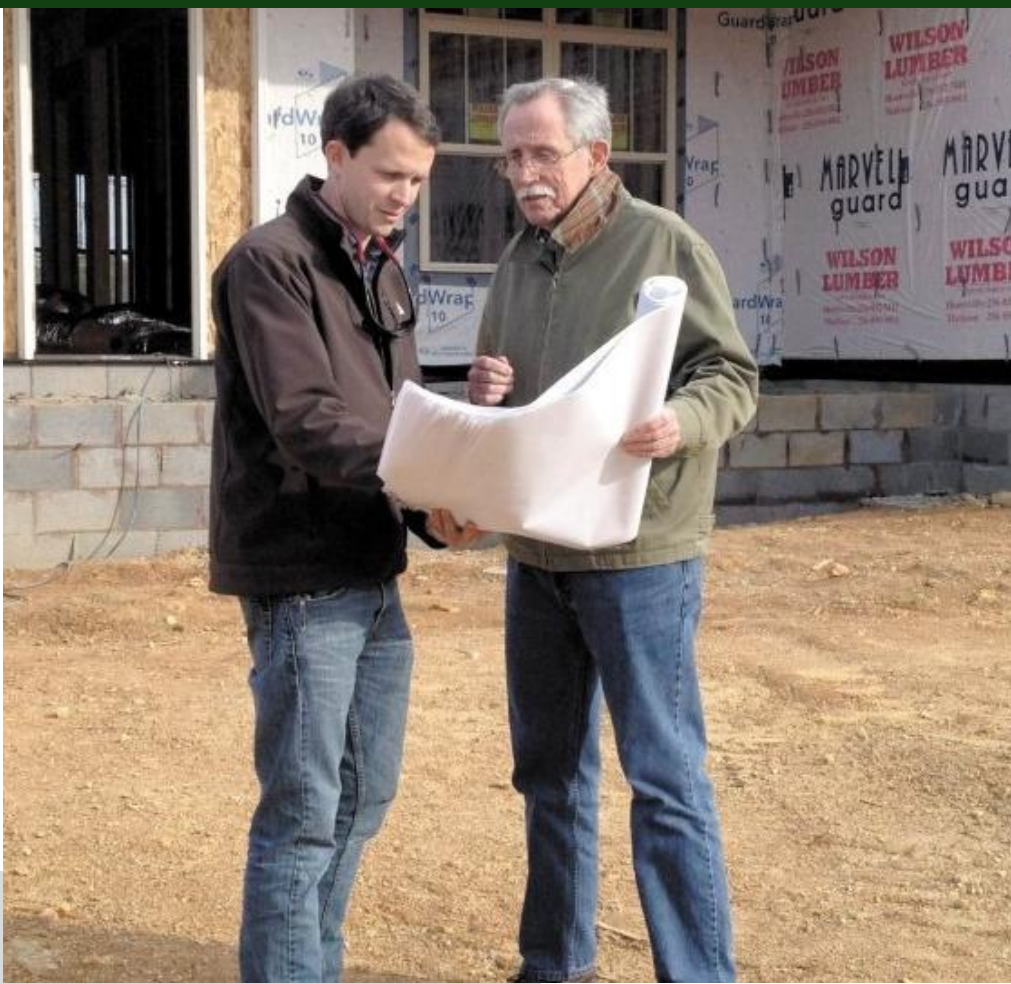
GREENBRIER HILLS

1 BURKE AVENUE, MADISON
AL 35756

MURPHYHOMESAL.COM

256-573-3281





ABOUT US

Murphy Homes, in Madison, AL, is a family owned local builder whose focus is on the customer. Since 1976 we have built new homes in Alabama that withstand the test of time and that not only meet, but exceed, our customer's expectations. From its beginning years in carpentry to remodeling and finally home building, Murphy Homes has built its reputation on quality. With customizable home plans and great locations throughout North Central Alabama including Madison, Athens, East Limestone County, Madison County and Meridianville. Your home is the most personal investment you can make. We wake up everyday with the goal of creating a new home you can be proud to live in. By combining cutting edge design, thorough construction knowledge, and world class customer service, we are your builder.

MURPHYHOMESAL.COM



WHAT WE DO

We offer the following Cottage floor plans along with several structural and design options for the home buyer in need of a personalized home.

BALDWIN

Elevations A, B, C, D

HARPER

Elevations A, B*

HAWTHORNE

Elevations A, B, C, D

HEMMINGWAY

Elevations A, B, C, D

TWAIN

Elevations A, B, C, D, E, F, G

*Elevation Rendering not shown



BALDWIN ELEVATIONS

3,401 SF

5 BED / 2.5 BATH



ELEVATION A



ELEVATION B

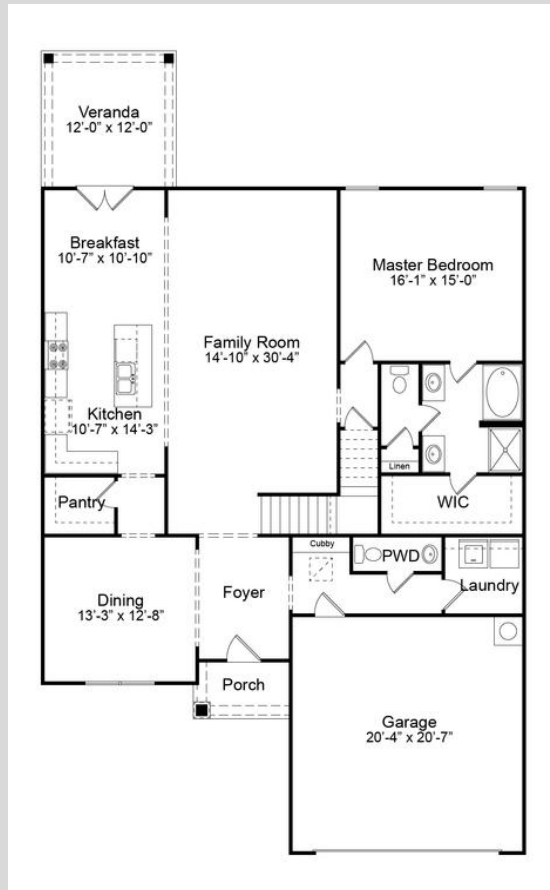


ELEVATION C

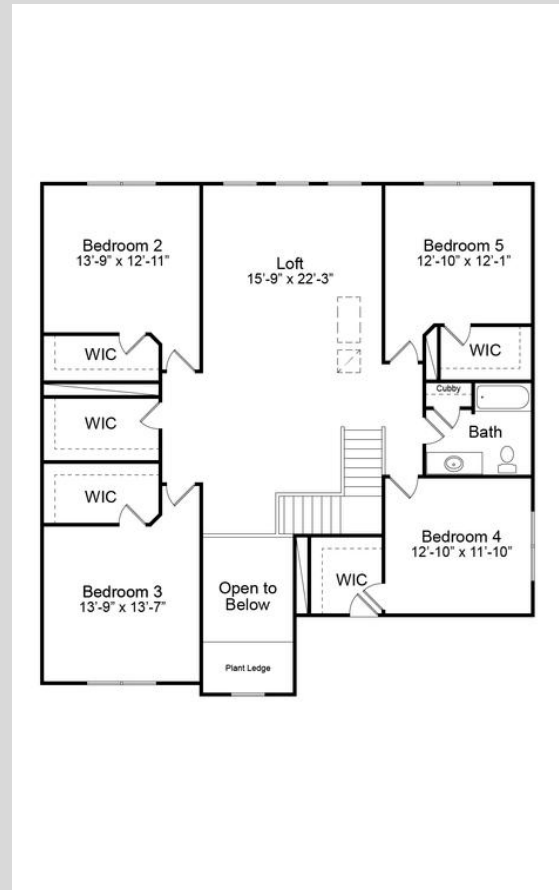


ELEVATION D

BALDWIN LINE DRAWINGS



FIRST FLOOR



SECOND FLOOR

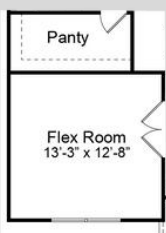
ADD-ONS:



FIREPLACE WITH OR WITHOUT BUILTINS IN SEVERAL LOCATIONS

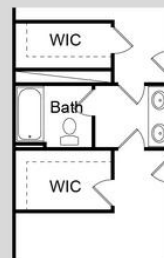


GUEST ROOM & BATH INSTEAD OF DINING ROOM

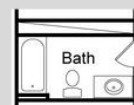


FLEX ROOM INSTEAD OF DINING ROOM

ADD-ONS:



JACK & JILL BATHROOM BETWEEN BEDROOMS 2 & 3



ADD BATH BETWEEN BEDROOMS 2 & 3

HARPER ELEVATION

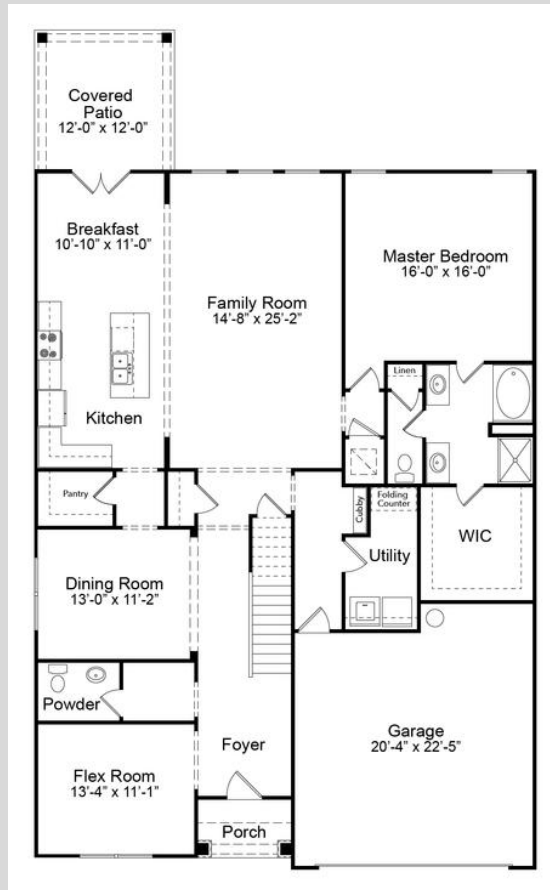
4,345 SF

5 BED / 2.5 BATH



ELEVATION A

HARPER LINE DRAWINGS



FIRST FLOOR

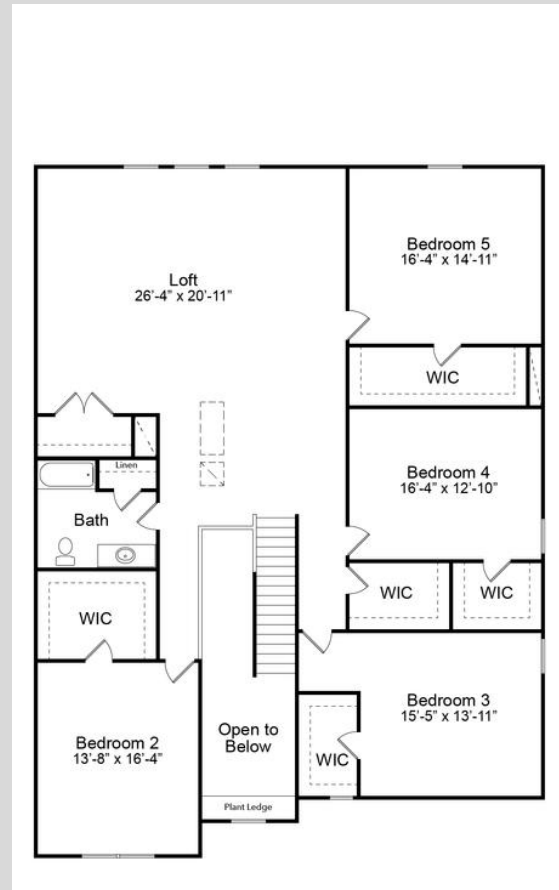
ADD-ONS:



**FIREPLACE IN THE
FAMILY ROOM**



**GUEST ROOM & ENSUITE
BATH INSTEAD OF FLEX
ROOM**



SECOND FLOOR

ADD-ONS:



**ADD BATH BETWEEN
BEDROOMS 3 & 4**

HAWTHORNE ELEVATIONS

1,647-2,227 SF

3 BED / 2 BATH



ELEVATION A*

*CAN NOT ADD BONUS



ELEVATION B*

*CAN NOT ADD BONUS



ELEVATION C



ELEVATION D

BONUS OPTION 1:

1,992 SF

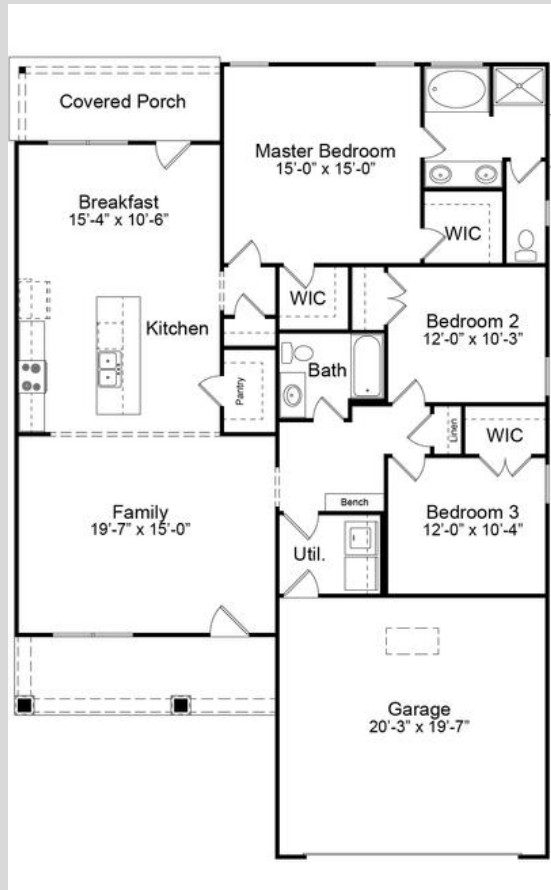
3 BED / 2 BATH

BONUS OPTION 2:

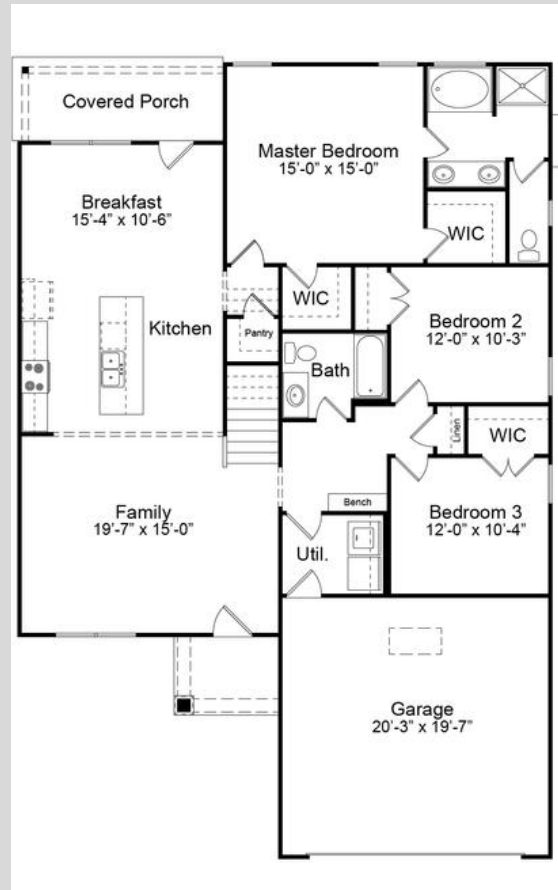
2,227 SF

4 BED / 2 BATH

HAWTHORNE LINE DRAWINGS

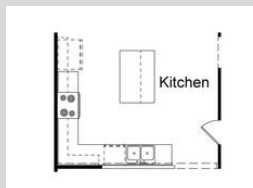


STANDARD

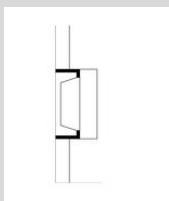


ADDED SECOND FLOOR

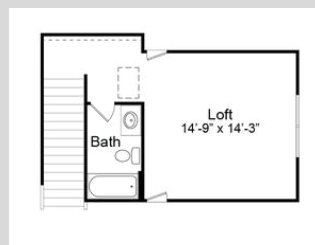
ADD-ONS:



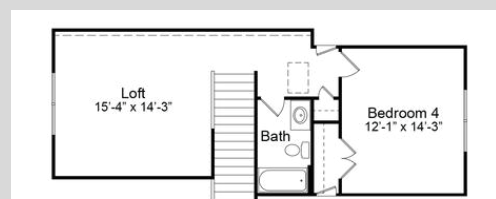
ALTER KITCHEN LAYOUT



ADD FIREPLACE TO FAMILY ROOM



SECOND FLOOR LOFT & BATH



SECOND-FLOOR LOFT, BATH, & 4TH BEDROOM

HEMINGWAY ELEVATIONS

2,481-3,319 SF

4 BED / 3 BATH



ELEVATION A*

*CAN NOT ADD BONUS



ELEVATION B*

*CAN NOT ADD BONUS



ELEVATION C



ELEVATION D

BONUS OPTION 1:

2,946 SQ FT

4 BED/3 BATH

BONUS OPTION 2:

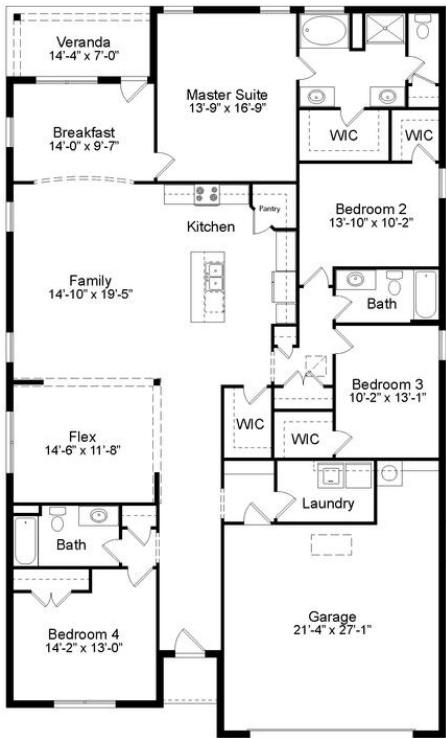
3,232 SQ FT

5 BED/3 BATH



ELEVATION E

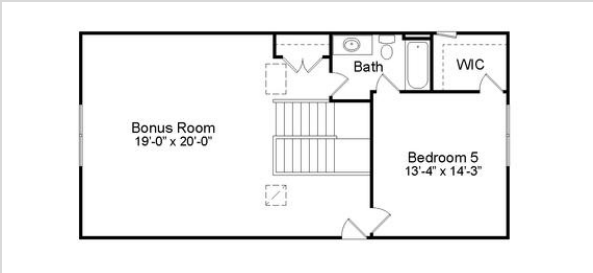
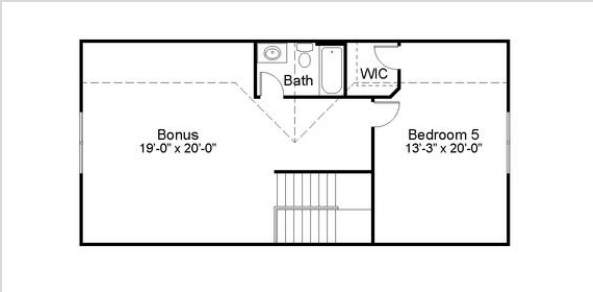
HEMINGWAY LINE DRAWINGS



STAIRS TO
SECOND FLOOR
OFF OF KITCHEN

FIRST FLOOR

BONUS ROOM OPTIONS:



TWAIN ELEVATIONS

2,178-3,193 SF

3 BED / 2 BATH



ELEVATION A*

*CAN NOT ADD BONUS



ELEVATION B*

*CAN NOT ADD BONUS



ELEVATION C



ELEVATION D



ELEVATION E

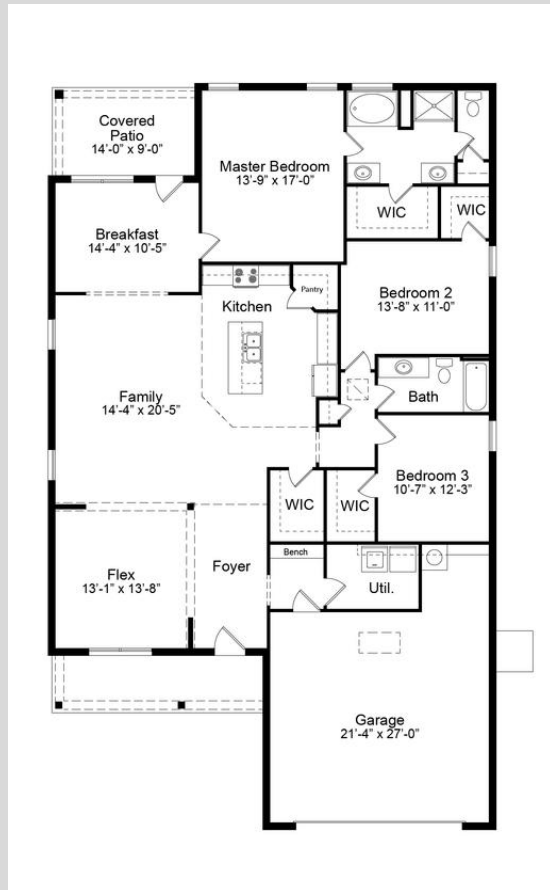


ELEVATION F

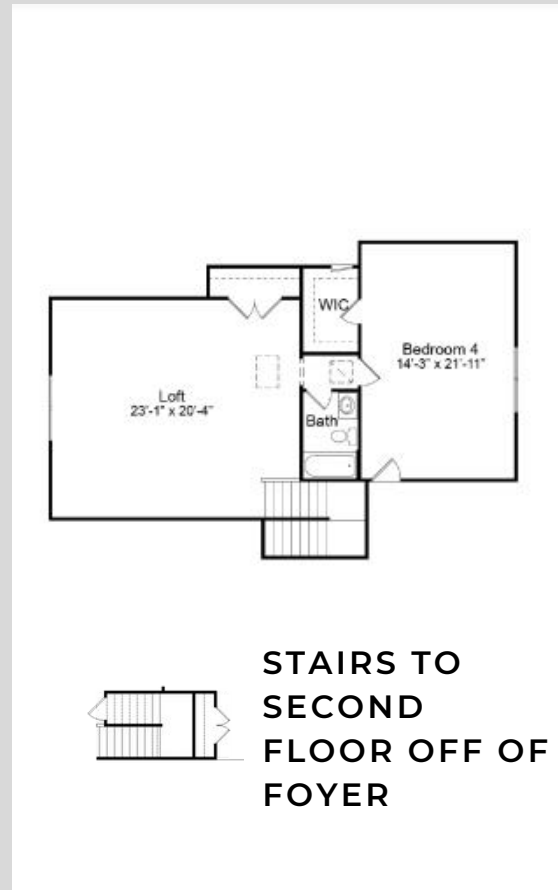


ELEVATION G

TWAIN LINE DRAWINGS

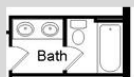


FIRST FLOOR

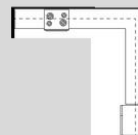


ADDED SECOND FLOOR

ADD-ONS:



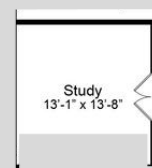
**DOUBLE VANITY
IN GUEST BATH**



**END INSTEAD OF
CORNER PANTRY**



**FIREPLACE IN
FAMILY ROOM**



**WALL OFF AND
ADD DOORS TO
FLEX ROOM**

BONUS OPTION 1:

2,752 SQ FT

3 BED / 2.5 BATH

BONUS OPTION 2:

3,036 SQ FT

4 BED / 3 BATH

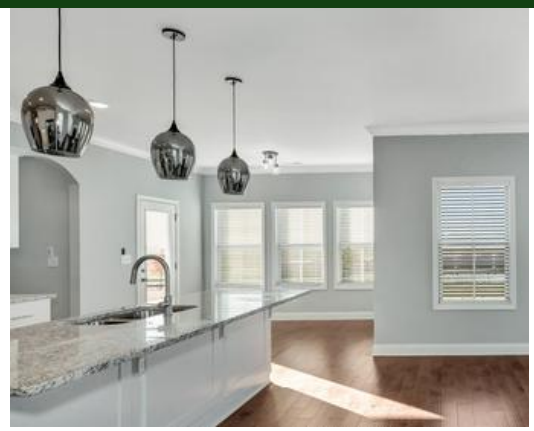
BONUS OPTION 3:

3,193 SQ FT

5 BED / 3 BATH

INCLUDED AMENITIES

We offer the following included amenities in each of our homes.



Kitchen

- GE stainless steel appliances include a free-standing 30" range, dishwasher, and over-the-range microwave.
- Delta "Coranto Series" Pull-Down Faucet Multi-Spray function featuring a lifetime guarantee.
- Granite Countertops with Durable Stainless Steel Under-Mount Sink.
- Hand-Laid Tile Backsplash.
- Painted Cabinets

Master Bathroom

- Delta "Woodhurst" Series faucets featuring a lifetime guarantee.
- 36" "Gentlemen's Height" Vanities.
- Easy to clean and long-lasting Granite Countertops.
- Luxurious Shower with Full Height Hinged Shower Door
- Cultured Marble Soaker Tub
- Walk-In Master Closet

Flooring

- Beautiful, Durable Hardwood Floors are included in Foyer, Kitchen, and Breakfast Nook.
- Ceramic Tile with Asphalt Underlayment included in utility room and all bathrooms.
- Thick Carpet with 6lb pad included in all bedrooms and family room.

Trim Carpentry and Moldings

- Extensive Crown Molding
- Our unique Murphy Homes Cubby™ with Wood Bench is included in every home we build
- Window casing

INCLUDED AMENITIES



Exterior Features

- Maintenance Free Full brick construction.
- Monolithic Slab Foundation.
- Vinyl siding used for accents.
- Full Bermuda Sod yard.
- Lush Landscaping Package.
- Home Site is expertly graded to ensure no standing water.
- Beautiful wrought iron mailbox.
- 30-Year Architectural Shingles
- Front and Back covered porches for enjoying the beautiful area.

Energy Efficiency

- R-13 Insulation in Walls
- R-30 Insulation in the Ceiling
- Murphy Homes Air Barrier™ air infiltration system in all homes to ensure your home is sealed tight against the elements.
- All Murphy Homes are “Blower Door” tested, and our ductwork is pressure tested to ensure <6% leakage.
- “Low-e” Windows and Doors.

Garage

- 2-Car Garage Included
- Roof System over garage is built with Attic Trusses for future storage with a Pull Down Stair Case for easy access
- Garages are sloped at garage door to make sure water flows out of your garage.
- Overhead Door™ brand garage door openers are quiet and durable.

Community Features

- Every home site features one large tree (live oak).

Floor Plans

- Expertly Design Floor Plans with our customers in mind.
- Plans feature opportunities for Tray or Vaulted Ceilings.
- Ability to work with Murphy Homes to personalize floor plans to fit your family's needs.



HOME PRICING SUBJECT TO CHANGE

256-573-3281