

# COTTAGES AT AYERS FARM

200 M.B. AYERS WAY,  
NEW MARKET, AL 35761

MURPHYHOMESAL.COM

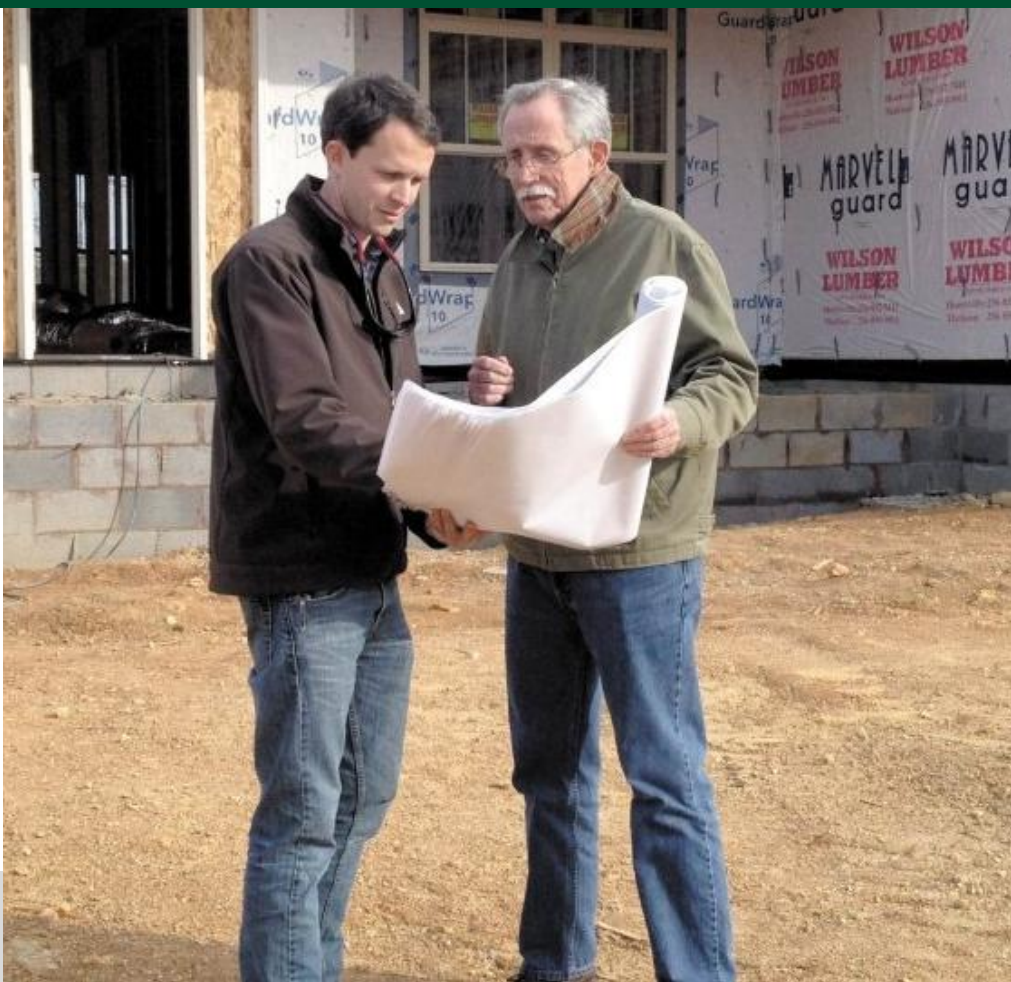
256-448-4241



**Murphy Homes**  
YOUR *Builder*



2.28.2024



# ABOUT US

Murphy Homes, in Madison, AL, is a family owned local builder whose focus is on the customer. Since 1976 we have built new homes in Alabama that withstand the test of time and that not only meet, but exceed, our customer's expectations. From its beginning years in carpentry to remodeling and finally home building, Murphy Homes has built its reputation on quality. With customizable home plans and great locations throughout North Central Alabama including Madison, Athens, East Limestone County, Madison County, New Market and Meridianville. Your home is the most personal investment you can make. We wake up everyday with the goal of creating a new home you can be proud to live in. By combining cutting edge design, thorough construction knowledge, and world class customer service, we are your builder.

**MURPHYHOMESAL.COM**



# WHAT WE DO

We offer the following Cottage floor plans along with several structural and design options for the home buyer in need of a personalized home.

## HAWTHORNE

Elevations A, B, C, D

## TWAIN

Elevations A, B, C, D, E, F, G

## HEMINGWAY

Elevations A, B, C, D

## FITZGERALD

Elevations A, B

## BALDWIN

Elevations A, B, C, D

\*Elevation Rendering not shown



# HAWTHORNE ELEVATIONS

1,709 - 2,289 SF

3 BED / 2 BATH



**ELEVATION A\***

\*CAN NOT ADD BONUS



**ELEVATION B\***

\*CAN NOT ADD BONUS



**ELEVATION C**



**ELEVATION D**

## BONUS OPTION 1:

2,054 SF

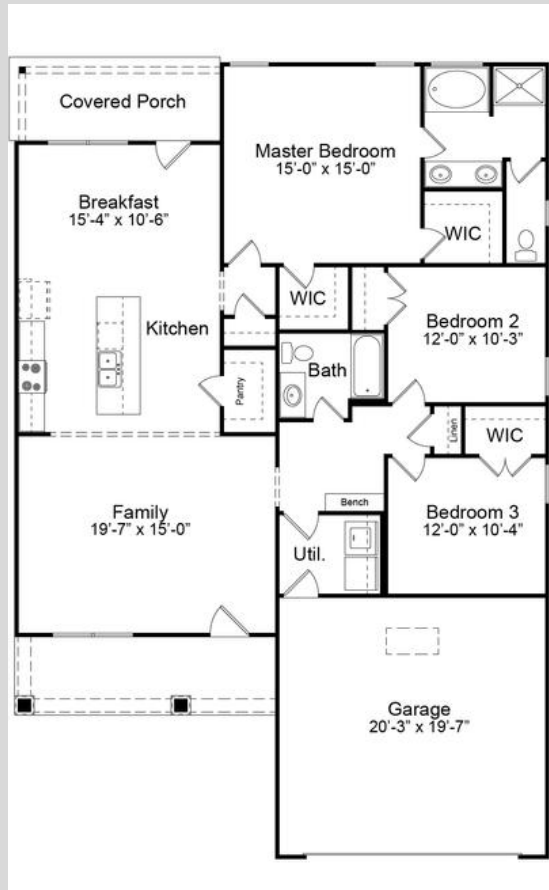
3 BED / 2 BATH

## BONUS OPTION 2:

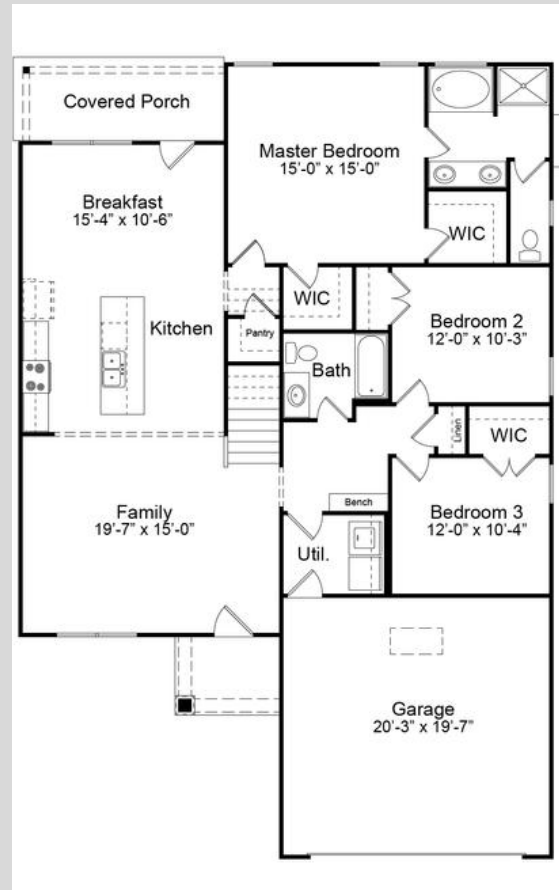
2,289 SF

4 BED / 2 BATH

# HAWTHORNE LINE DRAWINGS

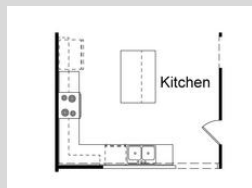


**STANDARD**

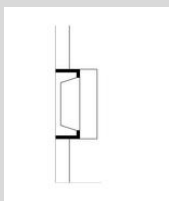


**ADDED SECOND FLOOR**

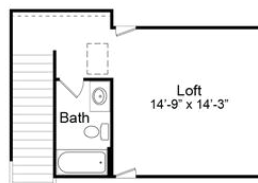
## ADD-ONS:



**ALTERNATE KITCHEN LAYOUT**



**ADD FIREPLACE TO FAMILY ROOM**



**SECOND FLOOR LOFT & BATH**



**SECOND-FLOOR LOFT, BATH, & 4TH BEDROOM**

# TWAIN ELEVATIONS

2,174 - 3,257 SF

3 BED / 2 BATH



**ELEVATION A\***

\*CAN NOT ADD BONUS



**ELEVATION B\***

\*CAN NOT ADD BONUS



**ELEVATION C**



**ELEVATION D**



**ELEVATION E**

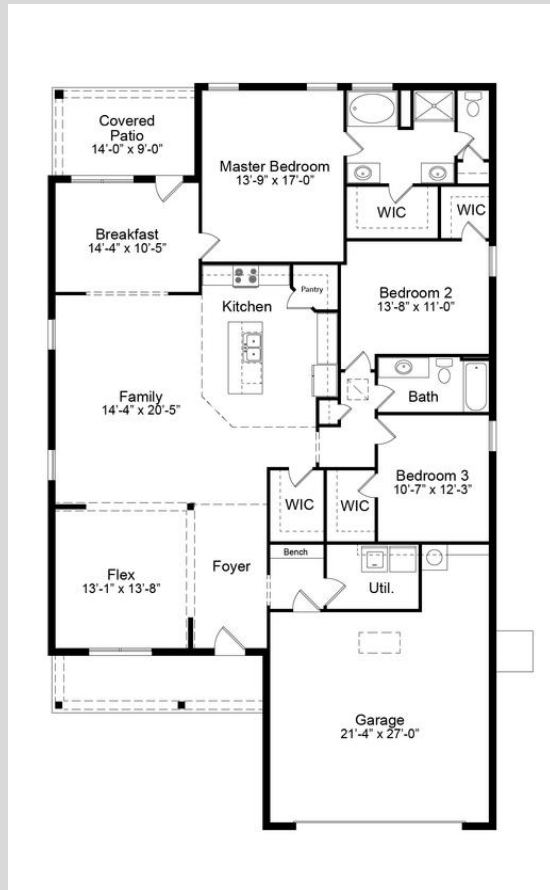


**ELEVATION F**

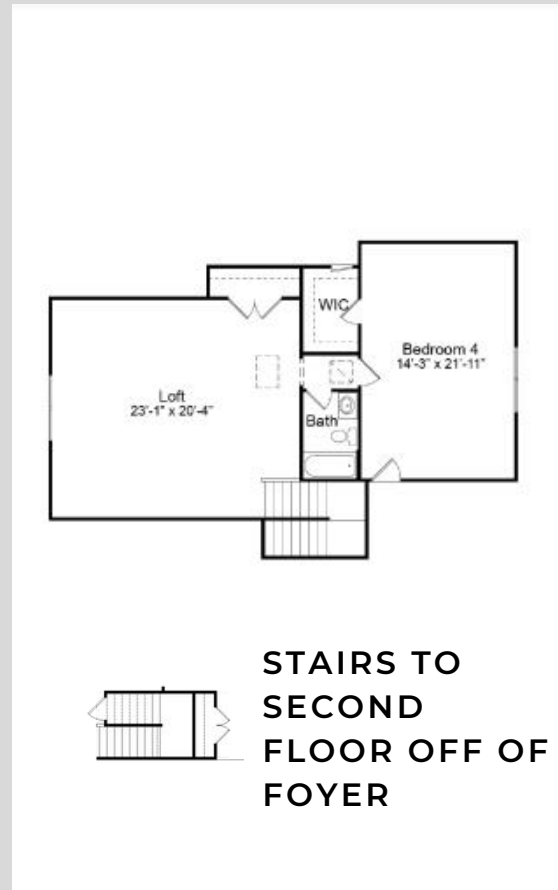


**ELEVATION G**

# TWAIN LINE DRAWINGS

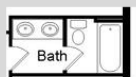


**FIRST FLOOR**

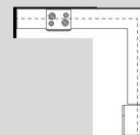


**STAIRS TO  
SECOND  
FLOOR OFF OF  
FOYER**

## ADD-ONS:



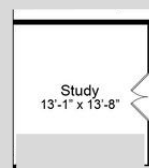
**DOUBLE VANITY  
IN GUEST BATH**



**END INSTEAD OF  
CORNER PANTRY**



**FIREPLACE IN  
FAMILY ROOM**



**WALL OFF AND  
ADD DOORS TO  
FLEX ROOM**

### BONUS OPTION 1:

**2,753 SQ FT**

**3 BED / 2.5 BATH**

### BONUS OPTION 2:

**3,137 SQ FT**

**4 BED / 3 BATH**

### BONUS OPTION 3:

**3,257 SQ FT**

**5 BED / 3 BATH**

# HEMINGWAY ELEVATIONS

2,484 - 3,309 SF

4 BED / 3 BATH



**ELEVATION A\***

\*CAN NOT ADD BONUS



**ELEVATION B\***

\*CAN NOT ADD BONUS



**ELEVATION C**



**ELEVATION D**

## BONUS OPTION 1:

3,023 SQ FT

4 BED/3 BATH

## BONUS OPTION 2:

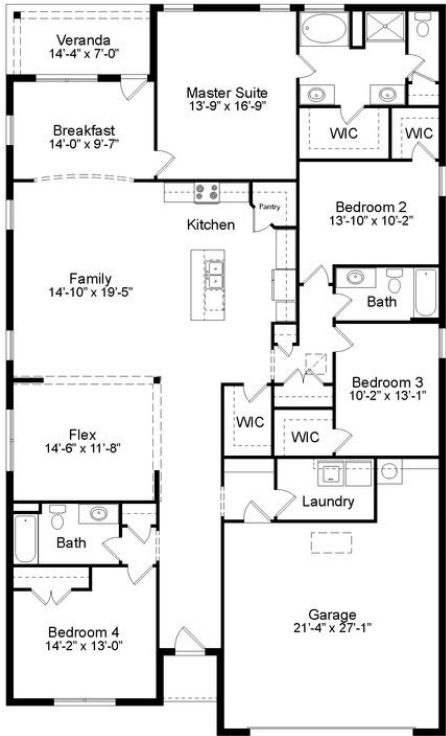
3,309 SQ FT

5 BED/3 BATH



**ELEVATION F**

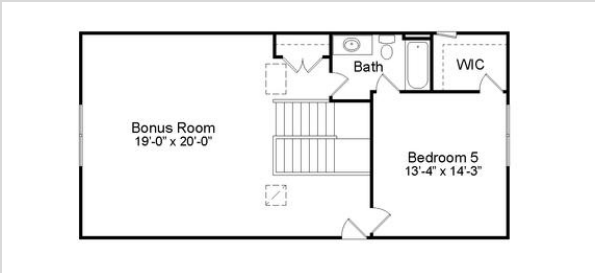
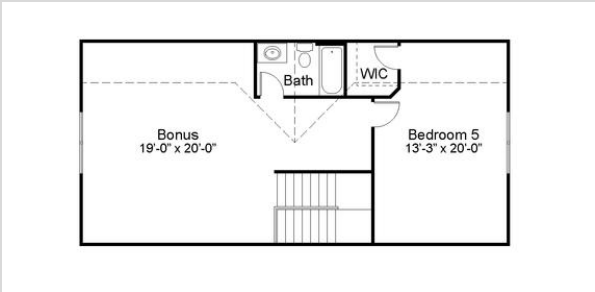
# HEMINGWAY LINE DRAWINGS



STAIRS TO  
SECOND FLOOR  
OFF OF KITCHEN

FIRST FLOOR

BONUS ROOM  
OPTIONS:



# FITZGERALD ELEVATIONS

2,752 SF

4 BED / 2.5 BATH

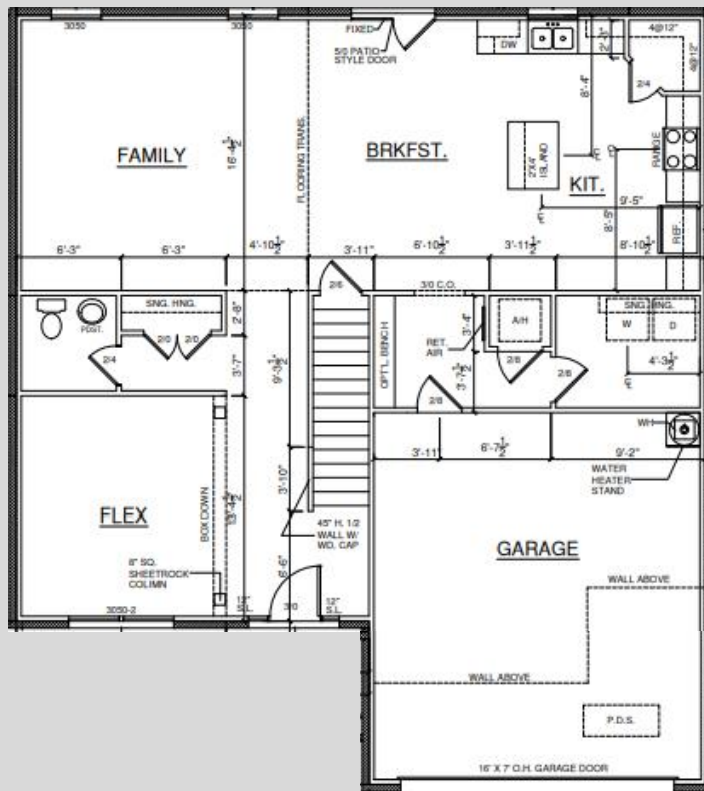


ELEVATION A

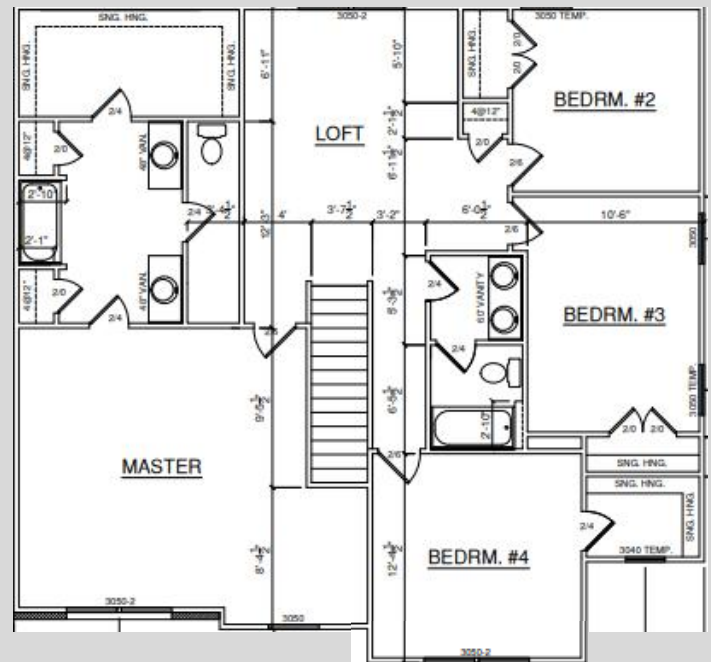


ELEVATION B

# FITZGERALD LINE DRAWINGS

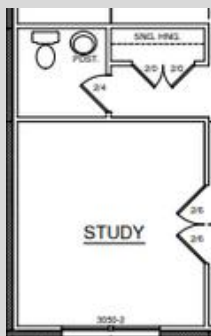


**FIRST FLOOR**



**SECOND FLOOR**

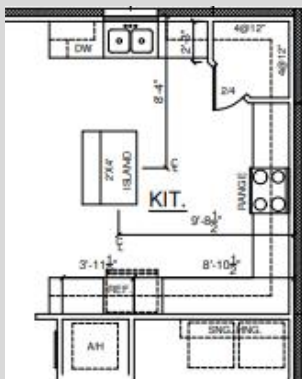
## ADD-ONS:



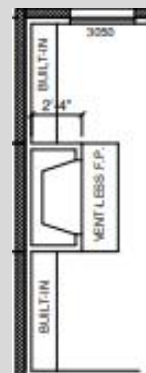
**ENCLOSED STUDY  
INSTEAD OF FLEX  
ROOM**



**OPTIONAL PRIMARY  
BATHROOM LAYOUT**



**ALTERNATE KITCHEN  
LAYOUT**



**FIREPLACE WITH  
OR WITHOUT  
BUILT-INS**

# BALDWIN ELEVATIONS

3,482 SF

5 BED / 2.5 BATH



ELEVATION A



ELEVATION B

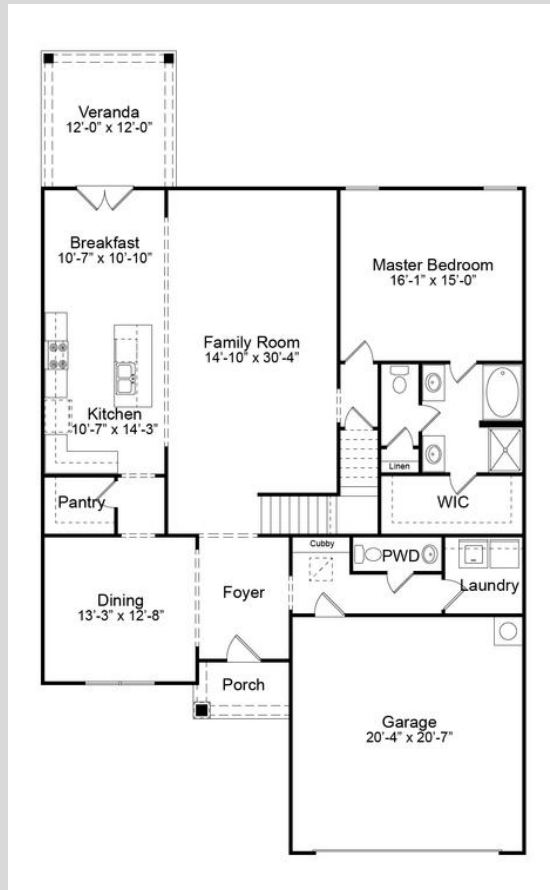


ELEVATION C

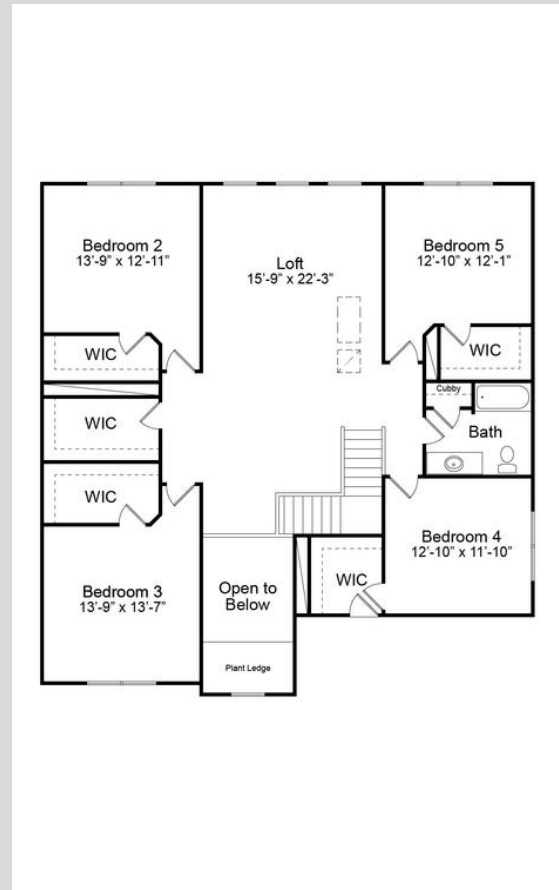


ELEVATION D

# BALDWIN LINE DRAWINGS



## FIRST FLOOR



## SECOND FLOOR

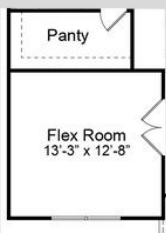
### ADD-ONS:



**FIREPLACE WITH OR WITHOUT BUILTINS IN SEVERAL LOCATIONS**

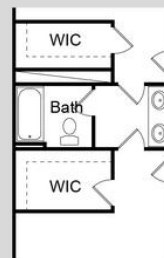


**GUEST ROOM & BATH INSTEAD OF DINING ROOM**

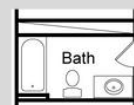


**FLEX ROOM INSTEAD OF DINING ROOM**

### ADD-ONS:



**JACK & JILL BATHROOM BETWEEN BEDROOMS 2 & 3**



**ADD BATH BETWEEN BEDROOMS 2 & 3**

# INCLUDED AMENITIES

We offer the following included amenities in each of our homes.



## Kitchen

- GE stainless steel appliances include a free-standing 30" range, dishwasher, and over-the-range microwave.
- Delta "Coranto Series" pull-down faucet multi-spray function featuring a lifetime guarantee.
- Granite countertops with durable stainless steel under-mount sink.
- Hand-laid tile backsplash.

## Master Bathroom

- Delta "Woodhurst" Series faucets featuring a lifetime guarantee.
- 36" "Gentlemen's Height" vanities.
- Easy to clean and long-lasting granite countertops.
- Luxurious shower with full height hinged shower door.
- Relaxing soaker tub.
- Walk-in primary closet.

## Flooring

- Durable RevWood floors are included in the foyer, kitchen, and breakfast nook.
- Ceramic tile with underlayment included in utility room and all bathrooms.
- Plush carpet with 6lb pad included in all bedrooms and the family room.

## Trim Carpentry and Moldings

- Our unique Murphy Homes Cubby™ with Wood Bench is included in every home we build!
- Crown molding included in the foyer, kitchen, breakfast nook, family room, flex/dining room, and master bedroom.
- Window & door casing included throughout the home.

# INCLUDED AMENITIES

We offer the following included amenities in each of our homes.



## Exterior Features

- Maintenance free brick construction.
- Block and Fill foundation.
- Stone & siding used for exterior accents - when applicable.
- Bermuda sod yard - up to 1,000 sq yards.
- Lush landscaping package.
- Home site is expertly graded to ensure no standing water.
- 30-year architectural shingles.
- Front and back covered porches.

## Energy Efficiency

- R-13 insulation in the walls.
- R-30 insulation in the ceiling.
- Murphy Homes Air Barrier™ air infiltration system in all homes to ensure your home is sealed tight against the elements.
- All Murphy Homes are “Blower Door” tested, and our ductwork is pressure tested to ensure <6% leakage.
- “Low-e” windows and doors.

## Garage

- 2-Car "Overhead Door" brand garage door that are quiet and durable.
- Roof system over garage is built with attic trusses for future storage.
- Garage floors are sloped to ensure water flows out of your garage.

## Community Features

- Every home site features one live oak tree.

## Floor Plans

- Expertly Designed Floor Plans with our customers in mind.
- Plans feature opportunities for tray, vaulted, or coffered ceilings.
- Ability to work with Murphy Homes to personalize floor plans to fit your family's needs.

# ESTATES AT AYERS FARM

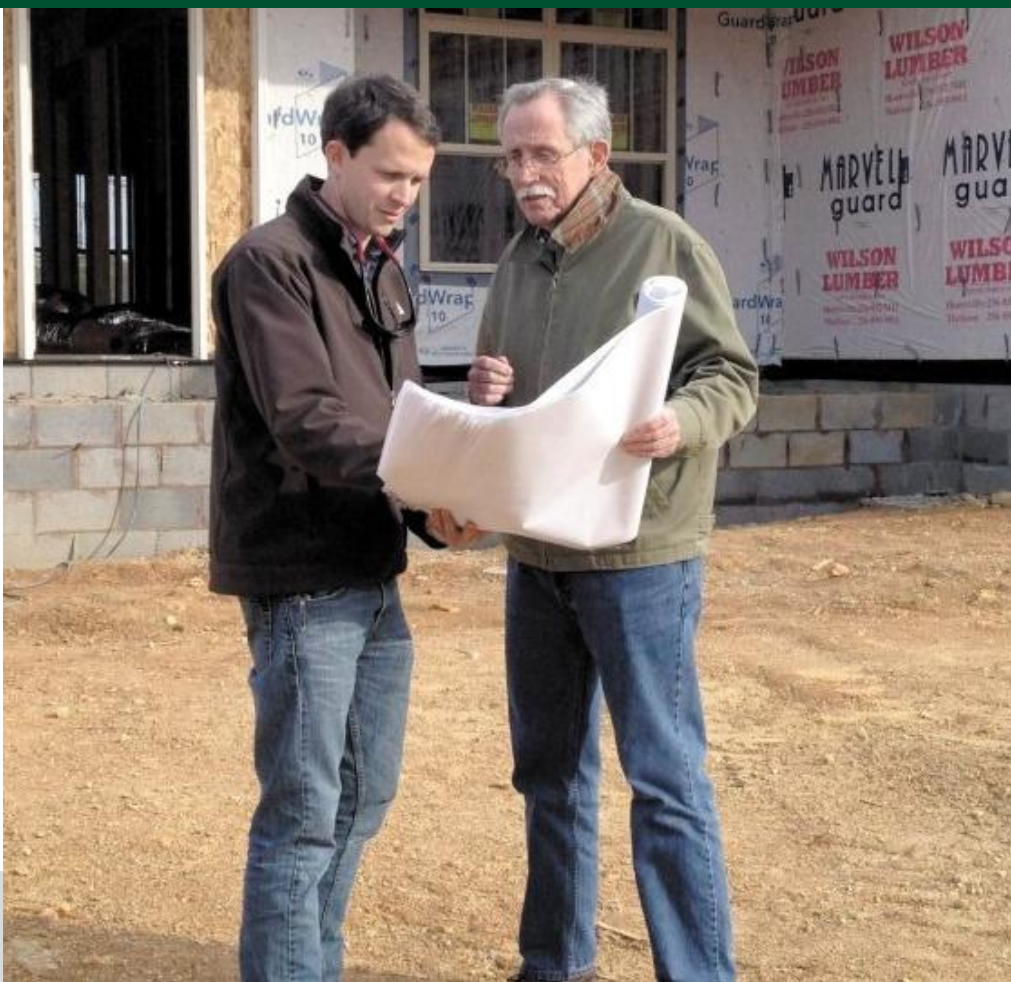
200 M.B. AYERS WAY,  
NEW MARKET, AL 35761  
MURPHYHOMESAL.COM  
256-573-3281



**Murphy Homes**  
YOUR *Builder*



2.28.2024



# ABOUT US

Murphy Homes, in Madison, AL, is a family owned local builder whose focus is on the customer. Since 1976 we have built new homes in Alabama that withstand the test of time and that not only meet, but exceed, our customer's expectations. From its beginning years in carpentry to remodeling and finally home building, Murphy Homes has built its reputation on quality. With customizable home plans and great locations throughout North Central Alabama including Madison, Athens, East Limestone County, Madison County and Meridianville. Your home is the most personal investment you can make. We wake up everyday with the goal of creating a new home you can be proud to live in. By combining cutting edge design, thorough construction knowledge, and world class customer service, we are your builder.

**MURPHYHOMESAL.COM**



# WHAT WE DO

We offer the following Estate floor plans along with several structural and design options for the home buyer in need of a personalized home.

## HANCOCK

Elevations A, B, C, D

## JEFFERSON

Elevations A, B, C, D

## REVERE

Elevations A, B, C

## WASHINGTON

Elevations A, B, C



# HANCOCK ELEVATIONS

2,540 - 3,300 SF

3 BED / 2.5 BATH



ELEVATION A



ELEVATION B



ELEVATION C



ELEVATION D

## BONUS OPTION 1:

2,953 SF

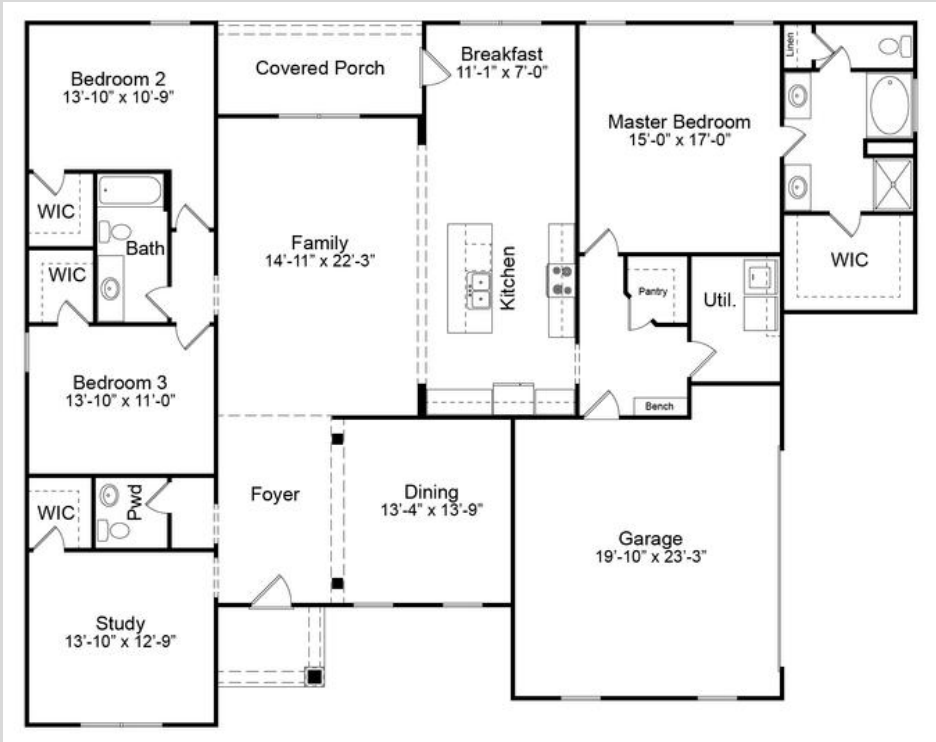
3 BED / 3 BATH

## BONUS OPTION 2:

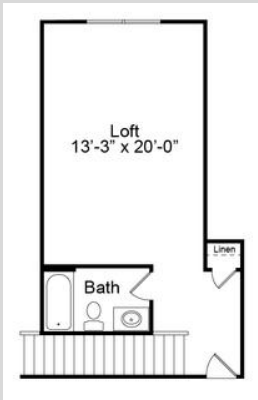
3,300 SF

4 BED / 3.5 BATH

# HANCOCK LINE DRAWINGS



MAIN FLOOR



BONUS 1



BONUS 2

## ADD-ONS:



JACK & JILL  
BATHROOM BETWEEN  
BEDROOMS 2 & 3



VERANDA



ADDED FIREPLACE  
AND/OR BUILTINS IN  
VERANDA



3RD CAR GARAGE



PEDESTRIAN DOOR

# JEFFERSON ELEVATIONS

3,025 - 4,174 SF

4 BED / 3.5 BATH



ELEVATION A



ELEVATION B



ELEVATION C



ELEVATION D

## BONUS OPTION 1:

3,464 SF

4 BED / 4 BATH

## BONUS OPTION 2:

3,848 SF

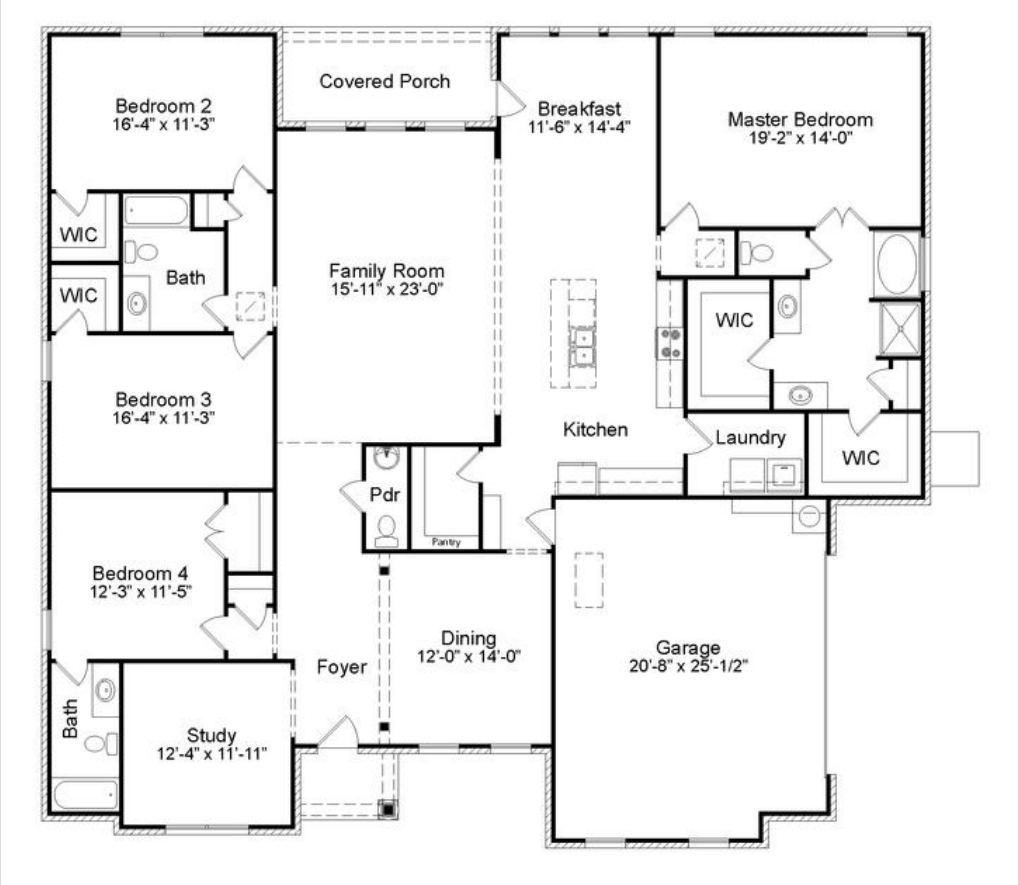
5 BED / 4 BATH

## BONUS OPTION 3:

4,174 SF

7 BED / 4 BATH

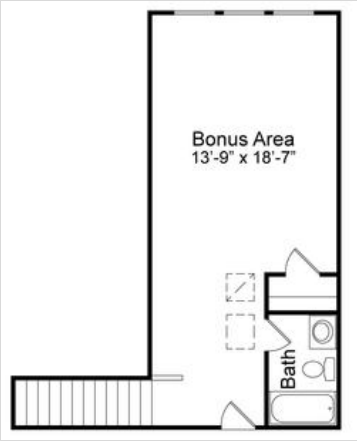
# JEFFERSON LINE DRAWINGS



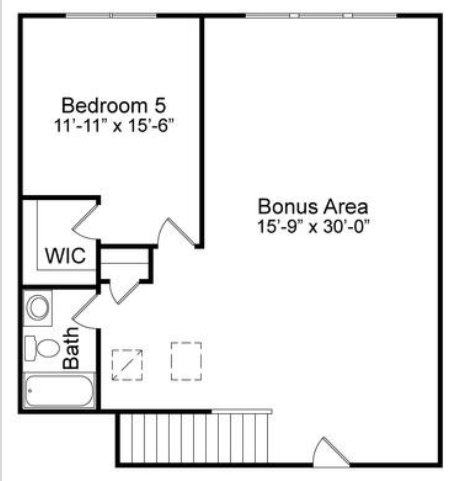
## FIRST FLOOR

### ADD-ONS:

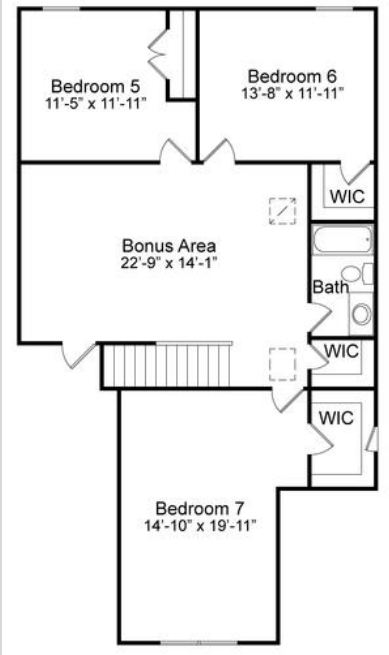
#### BONUS OPTION 1



#### BONUS OPTION 2



#### BONUS OPTION 3



# REVERE ELEVATIONS

3,243 SF

4 BED / 2.5 BATH



ELEVATION A



ELEVATION B

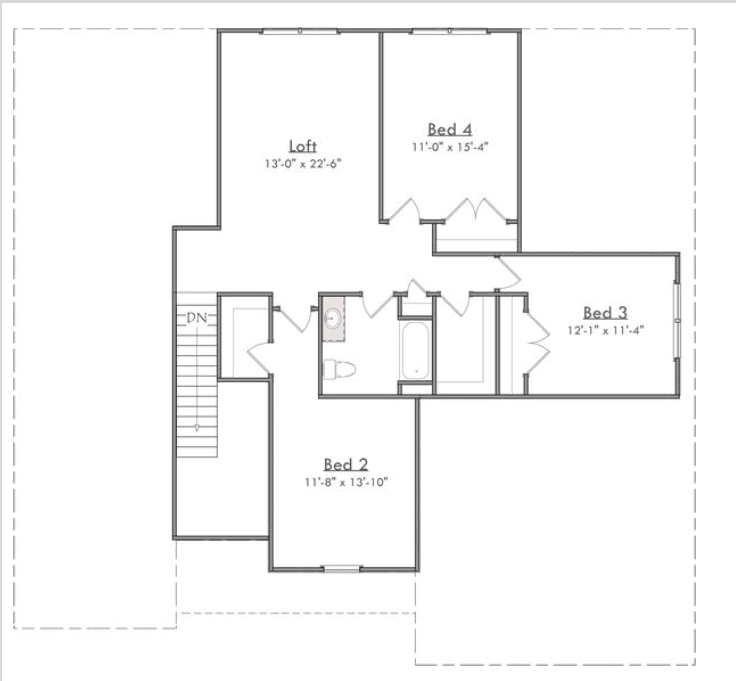


ELEVATION C

# REVERE LINE DRAWINGS



FIRST FLOOR



SECOND FLOOR

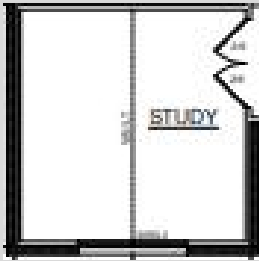
## ADD-ONS:



3RD CAR GARAGE



UPSTAIRS JACK & JILL BATH



VAULTED CEILINGS IN FLEX/STUDY AREA



PEDESTRIAN DOOR



KITCHEN LAYOUT

# WASHINGTON ELEVATIONS

3,863 SF

4 BED / 3.5 BATH

ELEVATION A



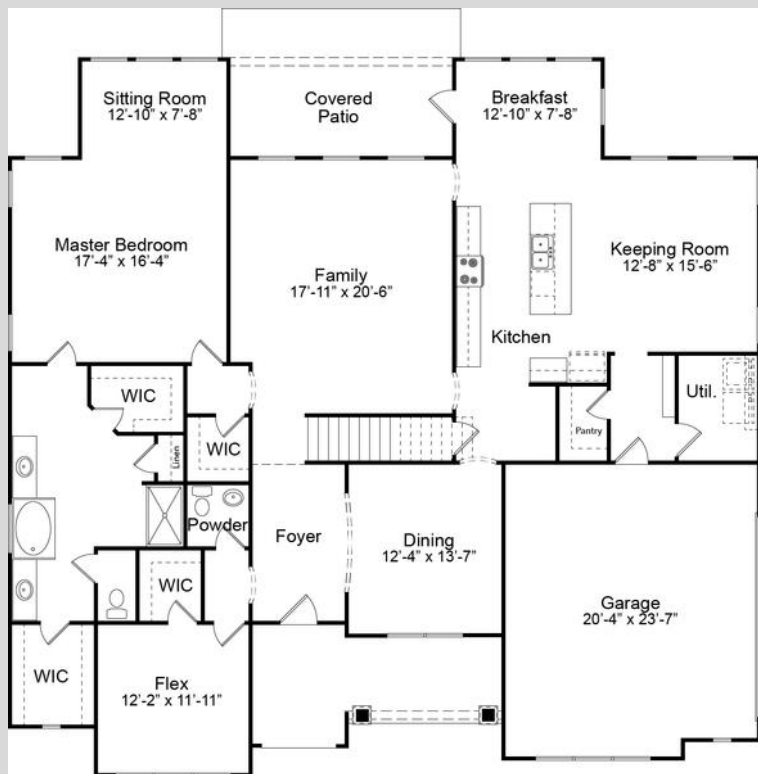
ELEVATION B



ELEVATION C



# WASHINGTON LINE DRAWINGS



**FIRST FLOOR**

## ADD-ONS:



**BUTLER'S NICHE**



**FIREPLACE WITH OR WITHOUT BUILTINS IN SEVERAL LOCATIONS**



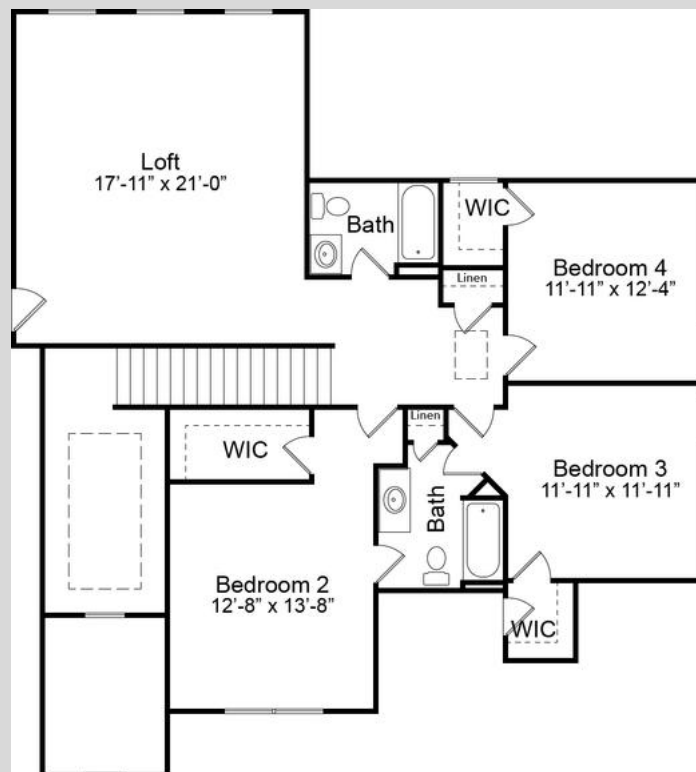
**PEDESTRIAN DOOR**



**UTILITY SINK**

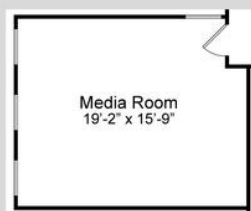


**ALTERNATE KITCHEN LAYOUT**



**SECOND FLOOR**

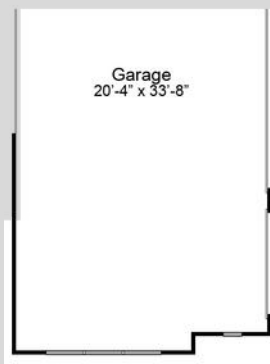
## ADD-ONS:



**MEDIA ROOM**



**FLOORED ATTIC STORAGE**



**3RD CAR GARAGE**

# INCLUDED AMENITIES

We offer the following included amenities in each of our homes.



## Kitchen

- GE stainless steel appliances include a free-standing 30" range, dishwasher, and over-the-range microwave.
- Delta "Coranto Series" pull-down faucet multi-spray function featuring a lifetime guarantee.
- Granite countertops with durable stainless steel under-mount sink.
- Hand-laid tile backsplash.
- Locally crafted cabinets.

## Master Bathroom

- Delta "Woodhurst" Series faucets featuring a lifetime guarantee.
- 36" "Gentlemen's Height" vanities.
- Easy to clean and long-lasting granite countertops.
- Luxurious shower with full height hinged shower door.
- Relaxing soaker tub.
- Walk-in primary closet.

## Flooring

- Durable hardwood floors are included in foyer, kitchen, and breakfast nook.
- Ceramic tile with underlayment included in utility room and all bathrooms.
- Plush carpet with 6lb pad included in all bedrooms and the family room.

## Trim Carpentry and Moldings

- Our unique Murphy Homes Cubby™ with Wood Bench is included in every home we build!
- Crown molding included in the foyer, kitchen, breakfast nook, family room, flex/dining room, and master bedroom.
- Window & door casing included throughout the home.

# INCLUDED AMENITIES

We offer the following included amenities in each of our homes.



## Exterior Features

- Maintenance free brick construction.
- Block and Fill foundation.
- Stone & siding used for exterior accents.
- Bermuda sod yard - up to 1,000 sq yards.
- Lush landscaping package.
- Home site is expertly graded to ensure no standing water.
- 30-year architectural shingles.
- Front and back covered porches.

## Energy Efficiency

- R-13 insulation in the walls.
- R-30 insulation in the ceiling.
- Murphy Homes Air Barrier™ air infiltration system in all homes to ensure your home is sealed tight against the elements.
- All Murphy Homes are “Blower Door” tested, and our ductwork is pressure tested to ensure <6% leakage.
- “Low-e” windows and doors.

## Garage

- 2-Car "Overhead Door" brand garage door that are quiet and durable.
- Roof system over garage is built with attic trusses for future storage.
- Garage floors are sloped to ensure water flows out of your garage.

## Community Features

- Every home site features one live oak tree.

## Floor Plans

- Expertly Designed Floor Plans with our customers in mind.
- Plans feature opportunities for tray, vaulted, or coffered ceilings.
- Ability to work with Murphy Homes to personalize floor plans to fit your family's needs.



**Murphy  
Homes**  
YOUR BUILDER

HOME PRICING SUBJECT TO CHANGE

256-373-5261