

# CARRIAGE PARK

CARRIAGE PARK LN,  
ATHENS, AL 35613

MURPHYHOMESAL.COM

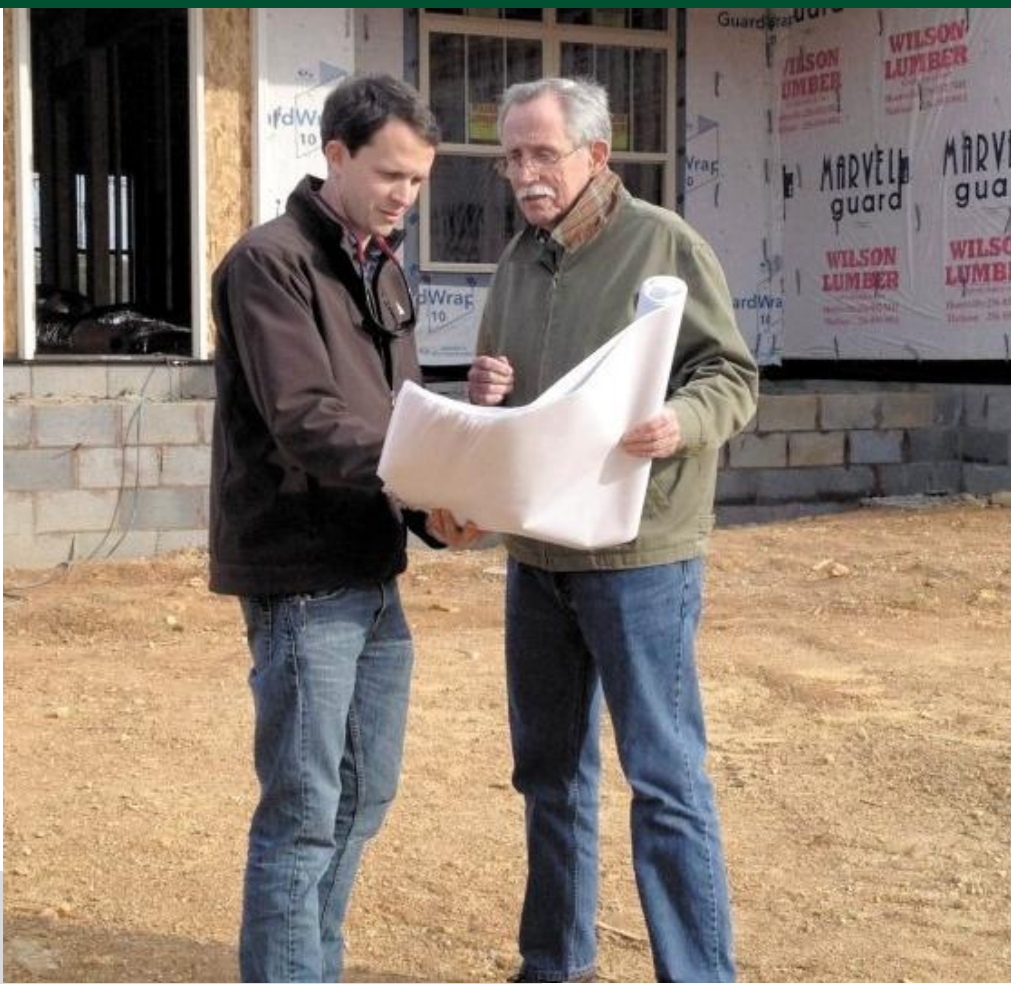
256-772-8030



**Murphy Homes**  
YOUR *Builder*



2.28.2024



# ABOUT US

Murphy Homes, in Madison, AL, is a family owned local builder whose focus is on the customer. Since 1976 we have built new homes in Alabama that withstand the test of time and that not only meet, but exceed, our customer's expectations. From its beginning years in carpentry to remodeling and finally home building, Murphy Homes has built its reputation on quality. With customizable home plans and great locations throughout North Central Alabama including Madison, Athens, East Limestone County, Madison County and Meridianville. Your home is the most personal investment you can make. We wake up everyday with the goal of creating a new home you can be proud to live in. By combining cutting edge design, thorough construction knowledge, and world class customer service, we are your builder.

[MURPHYHOMESAL.COM](http://MURPHYHOMESAL.COM)



# WHAT WE DO

We offer the following Estate floor plans along with several structural and design options for the home buyer in need of a personalized home.

## HANCOCK

Elevations A, B, C, D

## JEFFERSON

Elevations A, B, C, D

## REVERE

Elevations A, B, C

## WASHINGTON

Elevations A, B, C



# HANCOCK ELEVATIONS

2,540 - 3,300 SF

3 BED / 2.5 BATH



ELEVATION A



ELEVATION B



ELEVATION C



ELEVATION D

## BONUS OPTION 1:

2,953 SF

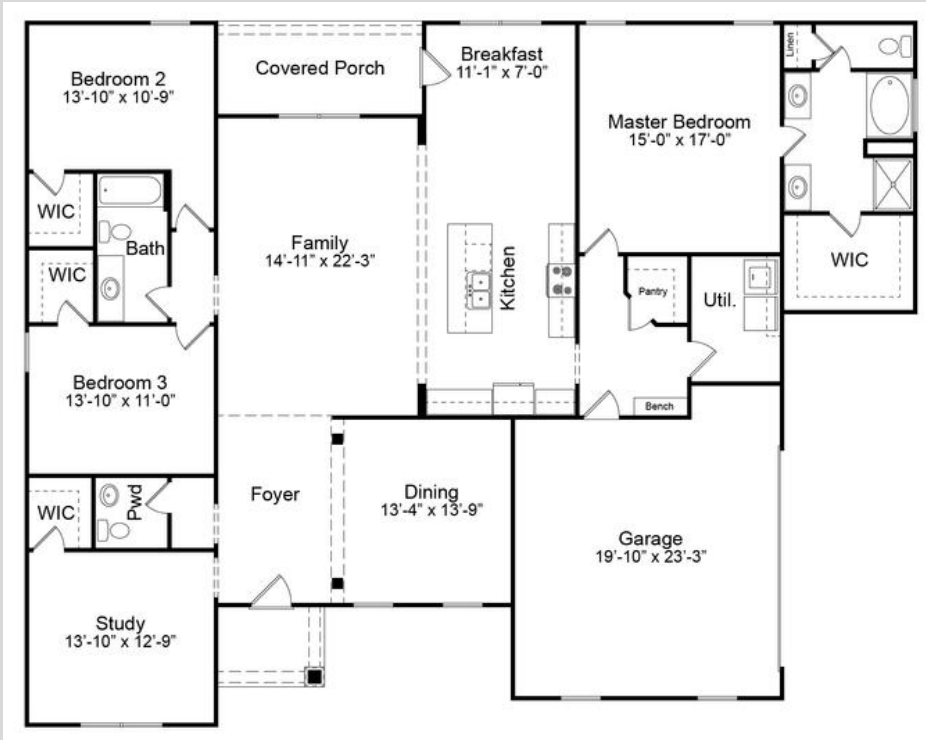
3 BED / 3 BATH

## BONUS OPTION 2:

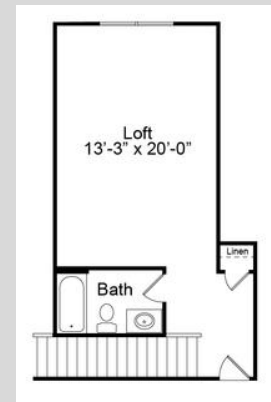
3,300 SF

4 BED / 3.5 BATH

# HANCOCK LINE DRAWINGS



**MAIN FLOOR**



**BONUS 1**



**BONUS 2**

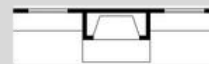
**ADD-ONS:**



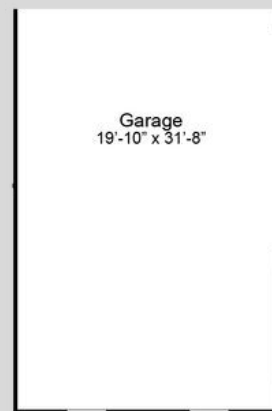
**JACK & JILL  
BATHROOM BETWEEN  
BEDROOMS 2 & 3**



**VERANDA**



**ADDED FIREPLACE  
AND/OR BUILTINS IN  
VERANDA**



**3RD CAR GARAGE**



**PEDESTRIAN DOOR**

# JEFFERSON ELEVATIONS

3,025 - 4,174 SF

4 BED / 3.5 BATH



ELEVATION A



ELEVATION B



ELEVATION C



ELEVATION D

## BONUS OPTION 1:

3,464 SF

4 BED / 4 BATH

## BONUS OPTION 2:

3,848 SF

5 BED / 4 BATH

## BONUS OPTION 3:

4,174 SF

7 BED / 4 BATH

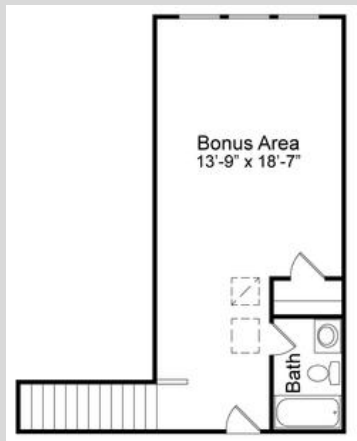
# JEFFERSON LINE DRAWINGS



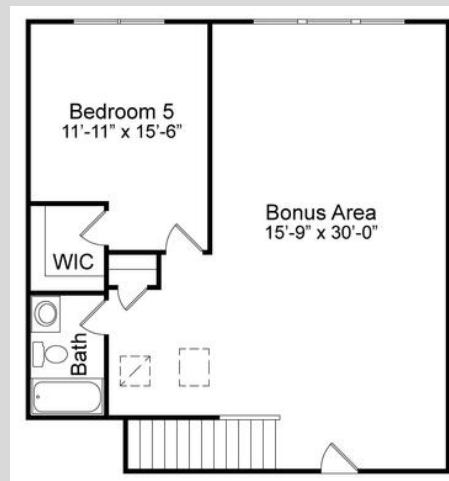
## FIRST FLOOR

### ADD-ONS:

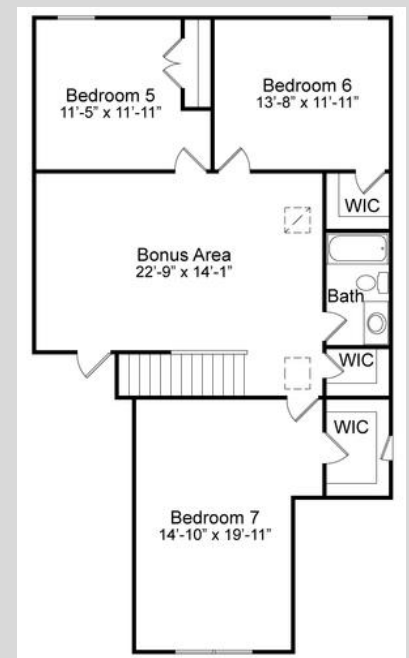
#### BONUS OPTION 1



#### BONUS OPTION 2



#### BONUS OPTION 3



# REVERE ELEVATIONS

3,243 SF

4 BED / 2.5 BATH



ELEVATION A



ELEVATION B



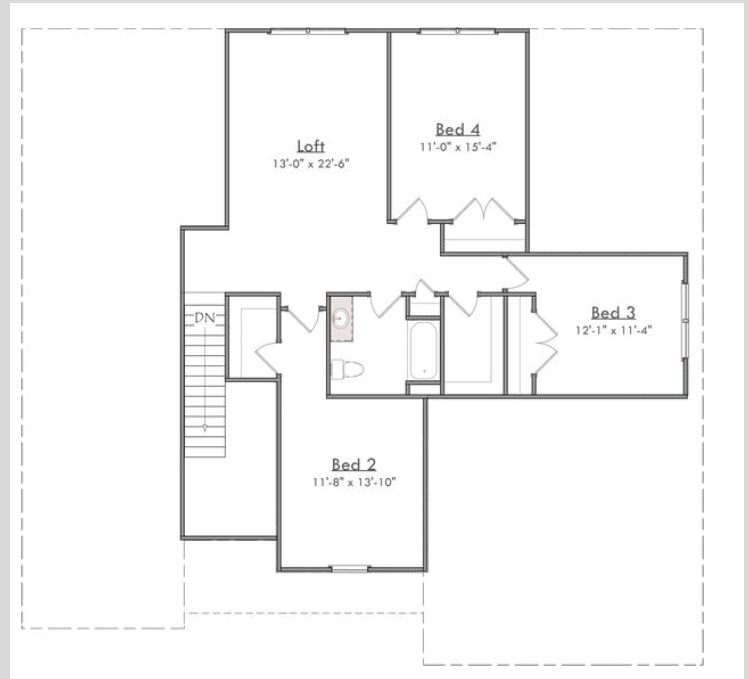
ELEVATION C



# REVERE LINE DRAWINGS

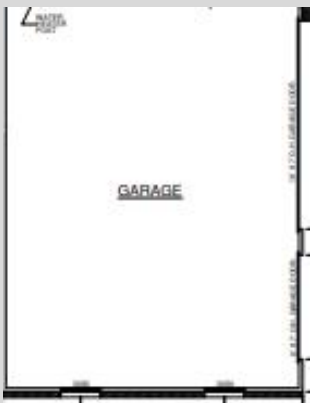


**FIRST FLOOR**

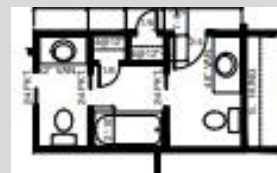


**SECOND FLOOR**

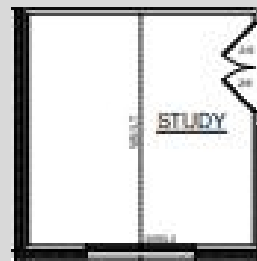
## ADD-ONS:



**3RD CAR GARAGE**



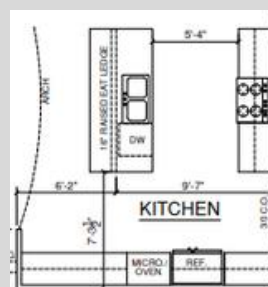
**UPSTAIRS JACK & JILL BATH**



**VAULTED CEILINGS IN FLEX/STUDY AREA**



**PEDESTRIAN DOOR**



**KITCHEN LAYOUT**

# WASHINGTON ELEVATIONS

3,863 SF

4 BED / 3.5 BATH

ELEVATION A



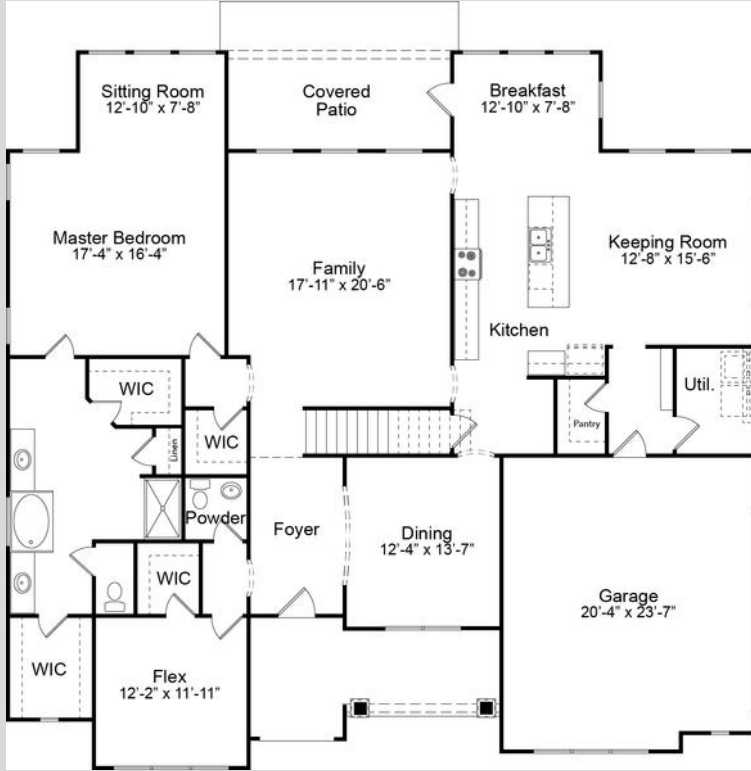
ELEVATION B



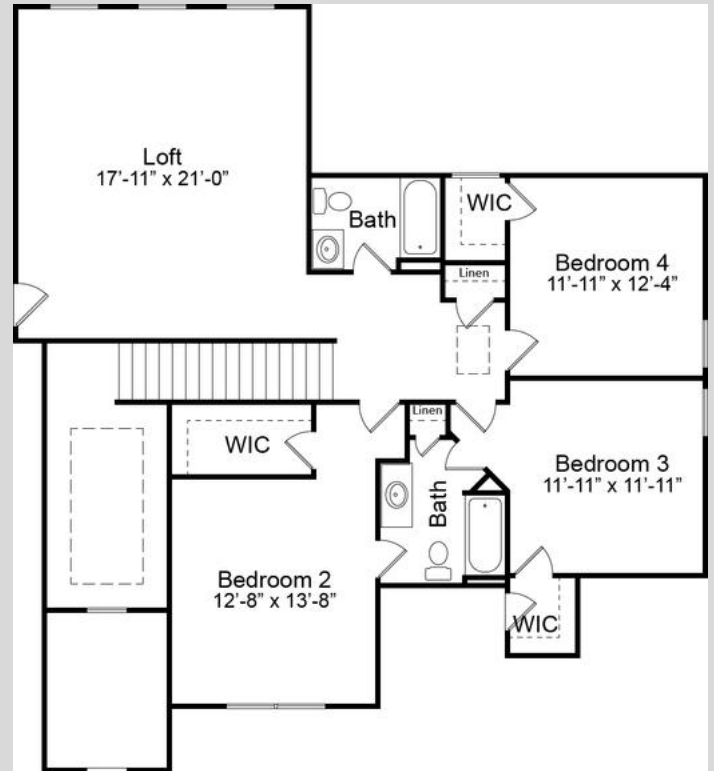
ELEVATION C



# WASHINGTON LINE DRAWINGS



**FIRST FLOOR**



**SECOND FLOOR**

**ADD-ONS:**

**ADD-ONS:**



**BUTLER'S NICHE**



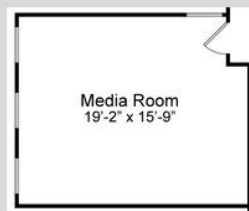
**FIREPLACE WITH OR WITHOUT BUILTINS IN SEVERAL LOCATIONS**



**PEDESTRIAN DOOR**



**UTILITY SINK**



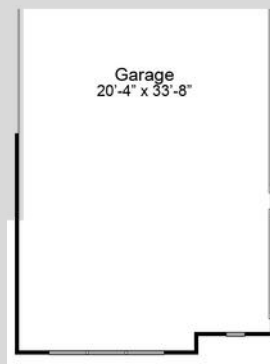
**MEDIA ROOM**



**FLOORED ATTIC STORAGE**



**ALTERNATE KITCHEN LAYOUT**



**3RD CAR GARAGE**

# INCLUDED AMENITIES

We offer the following included amenities in each of our homes.



## **Kitchen**

- GE stainless steel appliances include a free-standing 30" range, dishwasher, and over-the-range microwave.
- Delta "Coranto Series" pull-down faucet multi-spray function featuring a lifetime guarantee.
- Granite countertops with durable stainless steel under-mount sink.
- Hand-laid tile backsplash.
- Locally crafted cabinets.

## **Master Bathroom**

- Delta "Woodhurst" Series faucets featuring a lifetime guarantee.
- 36" "Gentlemen's Height" vanities.
- Easy to clean and long-lasting granite countertops.
- Luxurious shower with full height hinged shower door.
- Relaxing soaker tub.
- Walk-in primary closet.

## **Flooring**

- Durable hardwood floors are included in foyer, kitchen, and breakfast nook.
- Ceramic tile with underlayment included in utility room and all bathrooms.
- Plush carpet with 6lb pad included in all bedrooms and the family room.

## **Trim Carpentry and Moldings**

- Our unique Murphy Homes Cubby™ with Wood Bench is included in every home we build!
- Crown molding included in the foyer, kitchen, breakfast nook, family room, flex/dining room, and master bedroom.
- Window & door casing included throughout the home.

# INCLUDED AMENITIES

We offer the following included amenities in each of our homes.



## Exterior Features

- Maintenance free brick construction.
- Monolithic slab foundation.
- Stone & siding used for exterior accents.
- Bermuda sod yard - up to 1,000 sq yards.
- Lush landscaping package.
- Home site is expertly graded to ensure no standing water.
- 30-year architectural shingles.
- Front and back covered porches.

## Energy Efficiency

- R-13 insulation in the walls.
- R-30 insulation in the ceiling.
- Murphy Homes Air Barrier™ air infiltration system in all homes to ensure your home is sealed tight against the elements.
- All Murphy Homes are “Blower Door” tested, and our ductwork is pressure tested to ensure <6% leakage.
- “Low-e” windows and doors.

## Garage

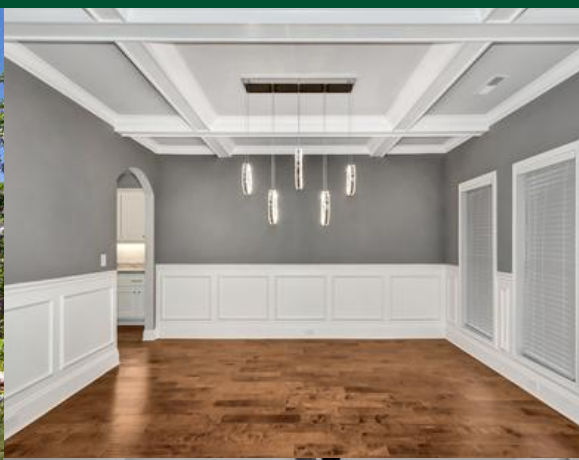
- 2-Car "Overhead Door" brand garage door that are quiet and durable.
- Roof system over garage is built with attic trusses for future storage.
- Garage floors are sloped to ensure water flows out of your garage.

## Community Features

- Every home site features one live oak tree.

## Floor Plans

- Expertly Designed Floor Plans with our customers in mind.
- Plans feature opportunities for tray, vaulted, or coffered ceilings.
- Ability to work with Murphy Homes to personalize floor plans to fit your family's needs.



**Murphy  
Homes**  
YOUR BUILDER

256-772-8030

HOME PRICING SUBJECT TO CHANGE