



22230 MOORESVILLE RD,
ATHENS, AL 35613

MURPHYHOMESAL.COM

256-573-3281

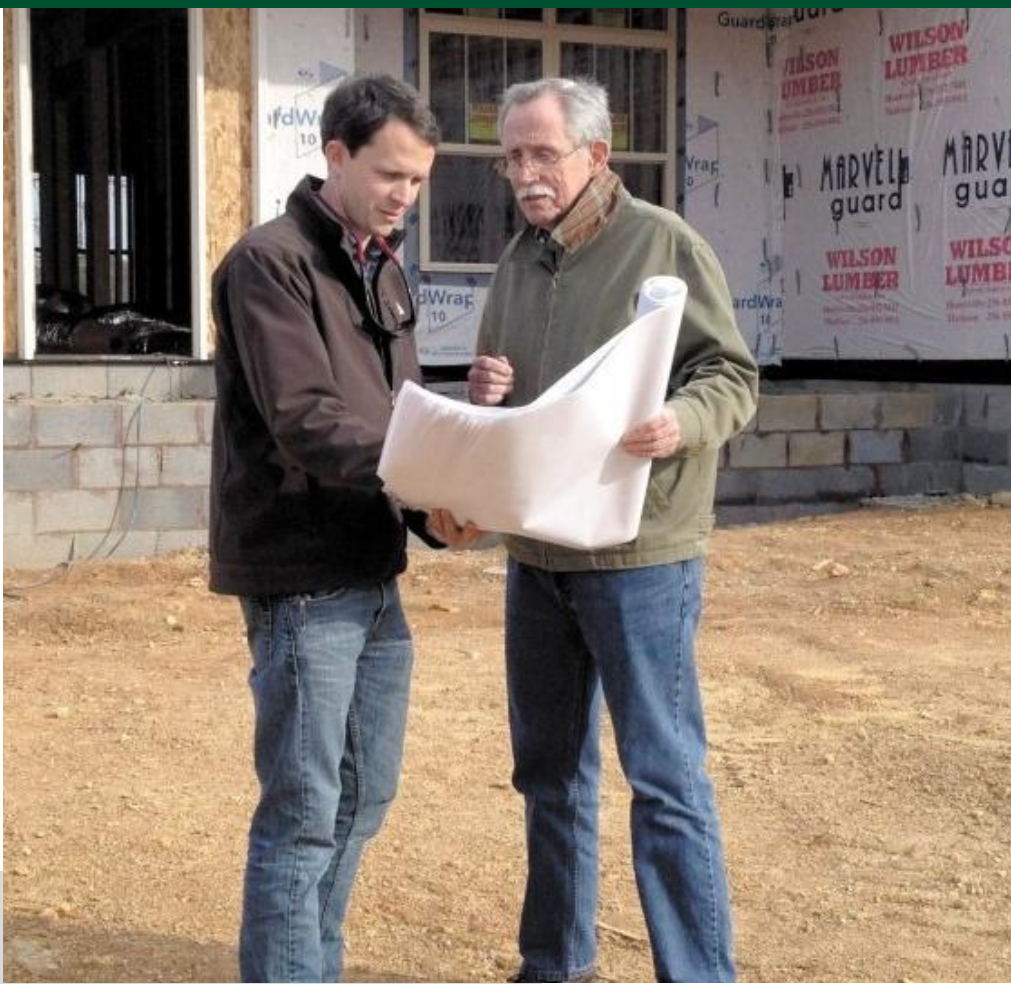
SOUTHERN
GAYLES



Murphy Homes
YOUR *Builder*



2.28.2024



ABOUT US

Murphy Homes, in Madison, AL, is a family owned local builder whose focus is on the customer. Since 1976 we have built new homes in Alabama that withstand the test of time and that not only meet, but exceed, our customer's expectations. From its beginning years in carpentry to remodeling and finally home building, Murphy Homes has built its reputation on quality. With customizable home plans and great locations throughout North Central Alabama including Madison, Athens, East Limestone County, Madison County and Meridianville. Your home is the most personal investment you can make. We wake up everyday with the goal of creating a new home you can be proud to live in. By combining cutting edge design, thorough construction knowledge, and world class customer service, we are your builder.

MURPHYHOMESAL.COM



WHAT WE DO

We offer the following Estate floor plans along with several structural and design options for the home buyer in need of a personalized home.

HANCOCK

Elevations A, B, C, D

JEFFERSON

Elevations A, B, C, D

REVERE

Elevations A, B, C

WASHINGTON

Elevations A, B, C



HANCOCK ELEVATIONS

2,540 - 3,300 SF

3 BED / 2.5 BATH



ELEVATION A



ELEVATION B



ELEVATION C



ELEVATION D

BONUS OPTION 1:

2,953 SF

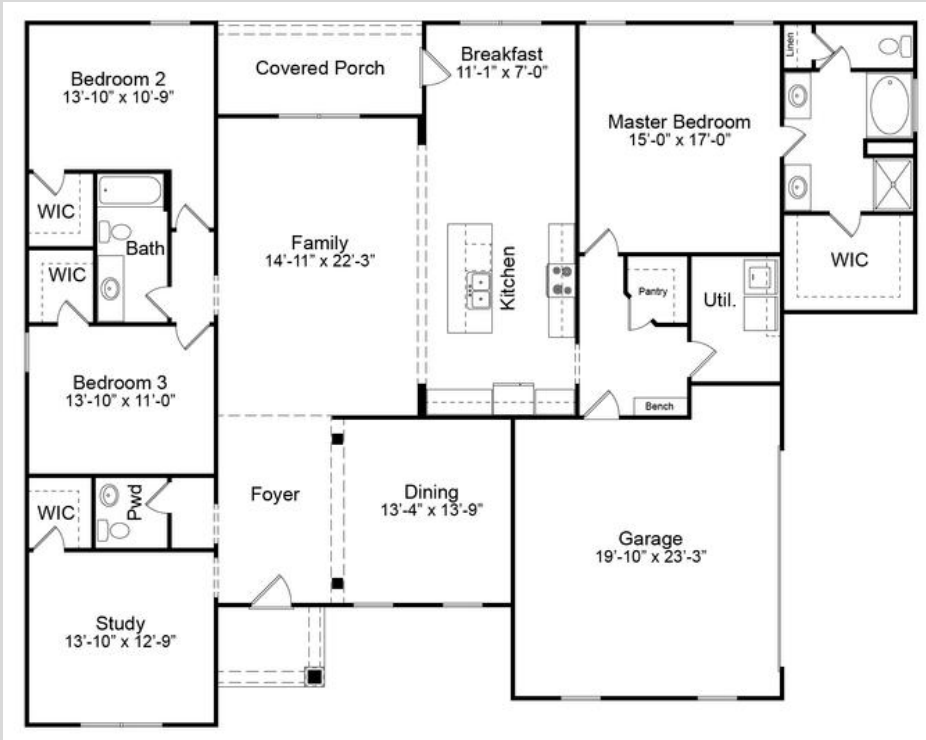
3 BED / 3 BATH

BONUS OPTION 2:

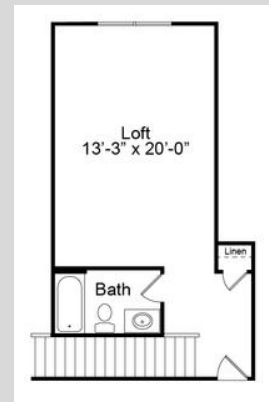
3,300 SF

4 BED / 3.5 BATH

HANCOCK LINE DRAWINGS



MAIN FLOOR



BONUS 1



BONUS 2

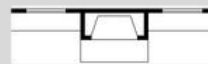
ADD-ONS:



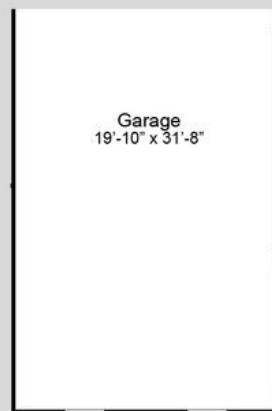
**JACK & JILL
BATHROOM BETWEEN
BEDROOMS 2 & 3**



VERANDA



**ADDED FIREPLACE
AND/OR BUILTINS IN
VERANDA**



3RD CAR GARAGE



PEDESTRIAN DOOR

JEFFERSON ELEVATIONS

3,025 - 4,174 SF

4 BED / 3.5 BATH



ELEVATION A



ELEVATION B



ELEVATION C



ELEVATION D

BONUS OPTION 1:

3,464 SF

4 BED / 4 BATH

BONUS OPTION 2:

3,848 SF

5 BED / 4 BATH

BONUS OPTION 3:

4,174 SF

7 BED / 4 BATH

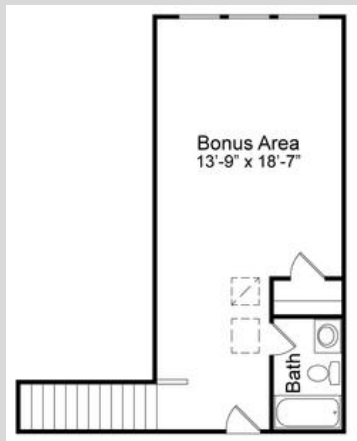
JEFFERSON LINE DRAWINGS



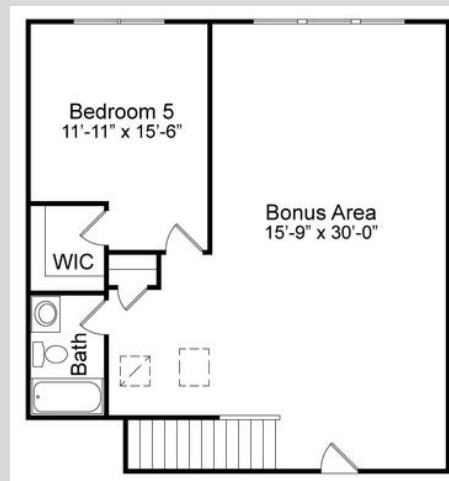
FIRST FLOOR

ADD-ONS:

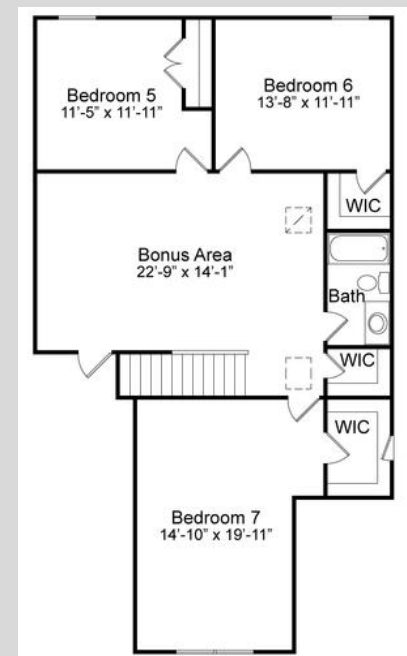
BONUS OPTION 1



BONUS OPTION 2



BONUS OPTION 3



REVERE ELEVATIONS

3,243 SF

4 BED / 2.5 BATH



ELEVATION A



ELEVATION B

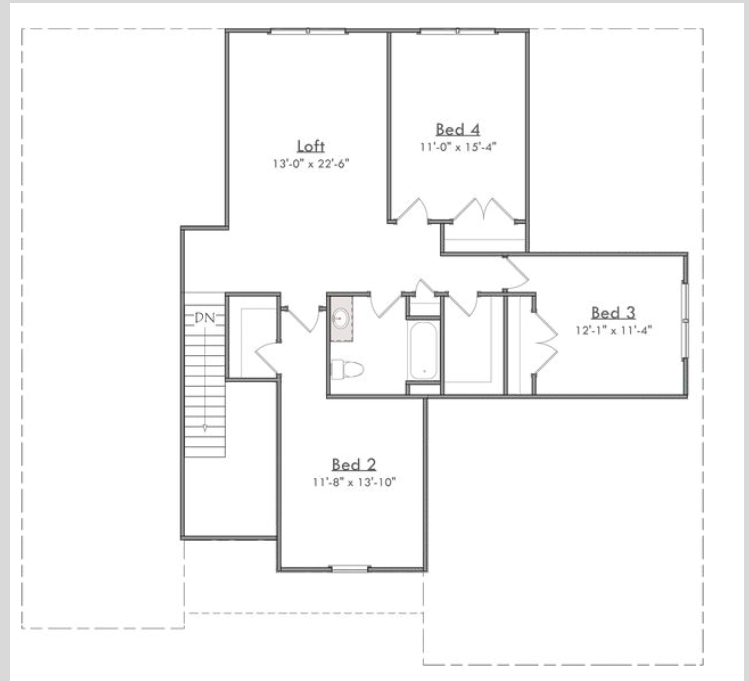


ELEVATION C

REVERE LINE DRAWINGS



FIRST FLOOR

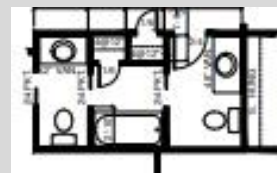


SECOND FLOOR

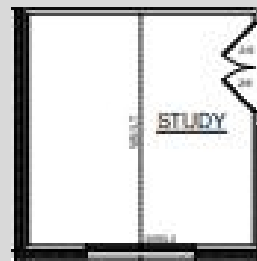
ADD-ONS:



3RD CAR GARAGE



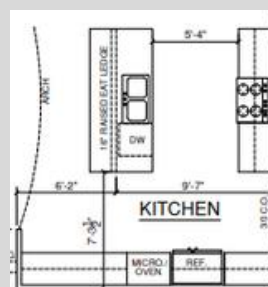
UPSTAIRS JACK & JILL BATH



VAULTED CEILINGS IN FLEX/STUDY AREA



PEDESTRIAN DOOR



KITCHEN LAYOUT

WASHINGTON ELEVATIONS

3,863 SF

4 BED / 3.5 BATH

ELEVATION A



ELEVATION B



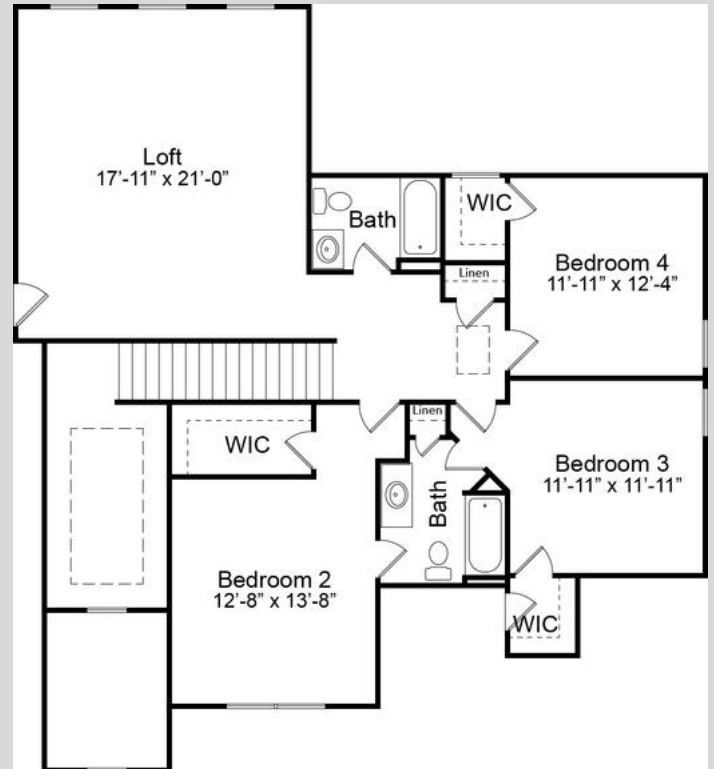
ELEVATION C



WASHINGTON LINE DRAWINGS



FIRST FLOOR



SECOND FLOOR

ADD-ONS:

ADD-ONS:



BUTLER'S NICHE



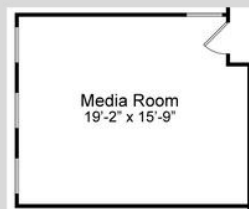
FIREPLACE WITH OR WITHOUT BUILTINS IN SEVERAL LOCATIONS



PEDESTRIAN DOOR



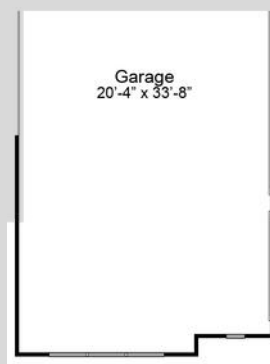
UTILITY SINK



MEDIA ROOM



FLOORED ATTIC STORAGE



3RD CAR GARAGE



ALTERNATE KITCHEN LAYOUT

INCLUDED AMENITIES

We offer the following included amenities in each of our homes.



Kitchen

- GE stainless steel appliances include a free-standing 30" range, dishwasher, and over-the-range microwave.
- Delta "Coranto Series" pull-down faucet multi-spray function featuring a lifetime guarantee.
- Granite countertops with durable stainless steel under-mount sink.
- Hand-laid tile backsplash.
- Locally crafted cabinets.

Master Bathroom

- Delta "Woodhurst" Series faucets featuring a lifetime guarantee.
- 36" "Gentlemen's Height" vanities.
- Easy to clean and long-lasting granite countertops.
- Luxurious shower with full height hinged shower door.
- Relaxing soaker tub.
- Walk-in primary closet.

Flooring

- Durable hardwood floors are included in foyer, kitchen, and breakfast nook.
- Ceramic tile with underlayment included in utility room and all bathrooms.
- Plush carpet with 6lb pad included in all bedrooms and the family room.

Trim Carpentry and Moldings

- Our unique Murphy Homes Cubby™ with Wood Bench is included in every home we build!
- Crown molding included in the foyer, kitchen, breakfast nook, family room, flex/dining room, and master bedroom.
- Window & door casing included throughout the home.

INCLUDED AMENITIES

We offer the following included amenities in each of our homes.



Exterior Features

- Maintenance free brick construction.
- Monolithic slab foundation.
- Stone & siding used for exterior accents.
- Bermuda sod yard - up to 1,000 sq yards.
- Lush landscaping package.
- Home site is expertly graded to ensure no standing water.
- 30-year architectural shingles.
- Front and back covered porches.

Energy Efficiency

- R-13 insulation in the walls.
- R-30 insulation in the ceiling.
- Murphy Homes Air Barrier™ air infiltration system in all homes to ensure your home is sealed tight against the elements.
- All Murphy Homes are “Blower Door” tested, and our ductwork is pressure tested to ensure <6% leakage.
- “Low-e” windows and doors.

Garage

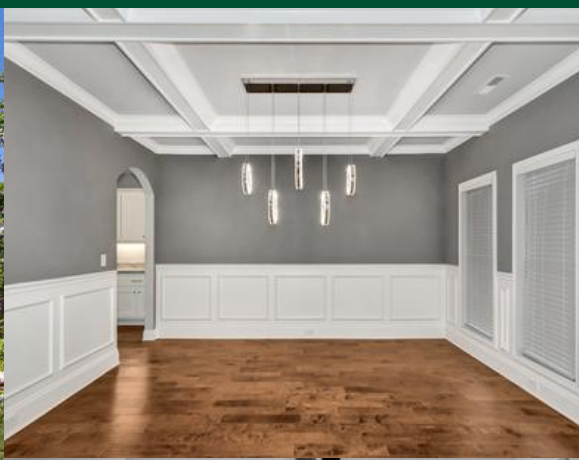
- 2-Car "Overhead Door" brand garage door that are quiet and durable.
- Roof system over garage is built with attic trusses for future storage.
- Garage floors are sloped to ensure water flows out of your garage.

Community Features

- Every home site features one live oak tree.

Floor Plans

- Expertly Designed Floor Plans with our customers in mind.
- Plans feature opportunities for tray, vaulted, or coffered ceilings.
- Ability to work with Murphy Homes to personalize floor plans to fit your family's needs.



**Murphy
Homes**
YOUR BUILDER

256-292-9005

HOME PRICING SUBJECT TO CHANGE