

THE

TERRACES

SUSAN LYNN DRIVE  
HAZEL GREEN, AL 35750

MURPHYHOMESAL.COM

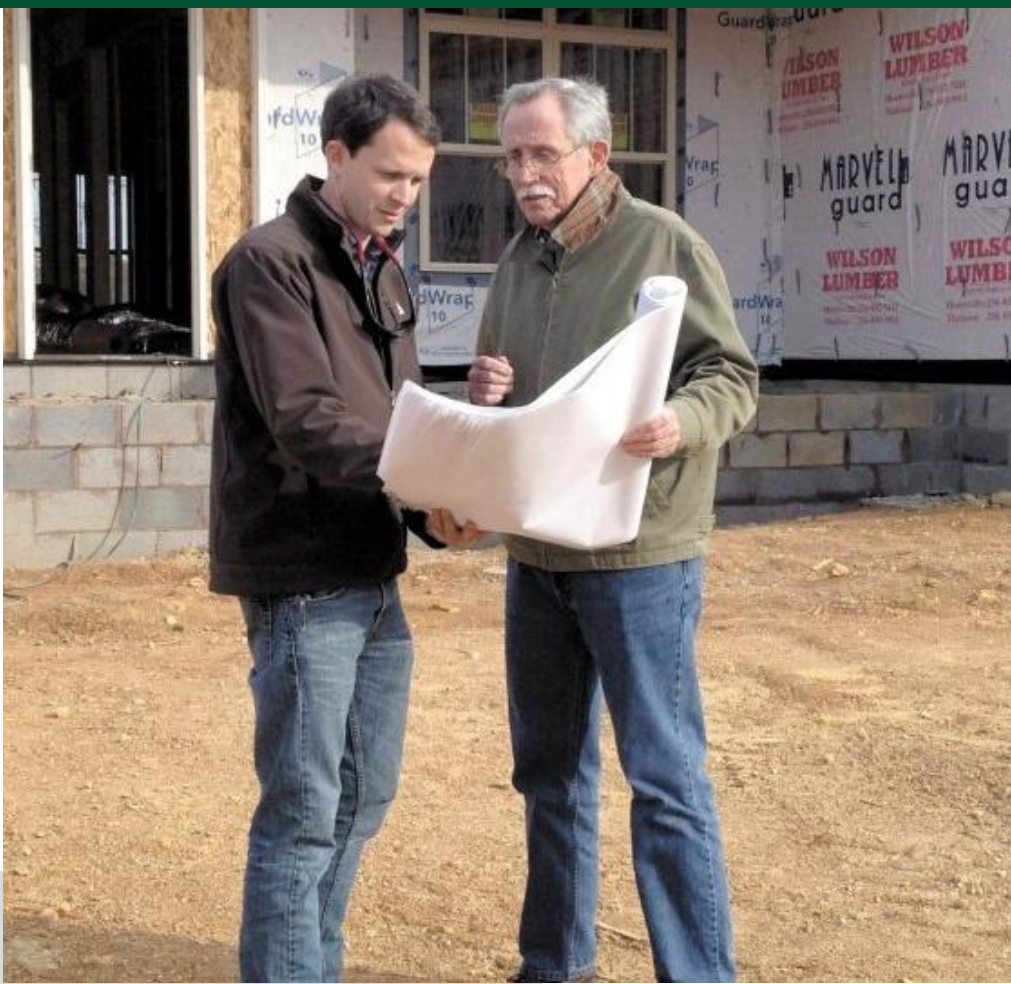
256-772-8030



**Murphy Homes**  
YOUR *Builder*



3.5.2024



# ABOUT US

Murphy Homes, in Madison, AL, is a family owned local builder whose focus is on the customer. Since 1976 we have built new homes in Alabama that withstand the test of time and that not only meet, but exceed, our customer's expectations. From its beginning years in carpentry to remodeling and finally home building, Murphy Homes has built its reputation on quality. With customizable home plans and great locations throughout North Central Alabama including Madison, Athens, East Limestone County, Madison County, New Market and Meridianville. Your home is the most personal investment you can make. We wake up everyday with the goal of creating a new home you can be proud to live in. By combining cutting edge design, thorough construction knowledge, and world class customer service, we are your builder.

[MURPHYHOMESAL.COM](http://MURPHYHOMESAL.COM)



# WHAT WE DO

We offer the following Townhome floor plan along with several structural and design options for the home buyer in need of a personalized home.

## TERRACES ELEVATIONS

Elevations A, B, C, D

## TERRACES FLOOR PLANS

Corner & Interior Homesites

## AVAILABLE UPGRADES

## INCLUDED AMENITIES





# TERRACES ELEVATIONS

1,769 SF

3 BED / 2 BATH



ELEVATION 1-A



ELEVATION 1-B



ELEVATION 1-C



ELEVATION 1-D

# TERRACES ELEVATIONS

1,769 SF

3 BED / 2 BATH



ELEVATION 2-A



ELEVATION 2-B



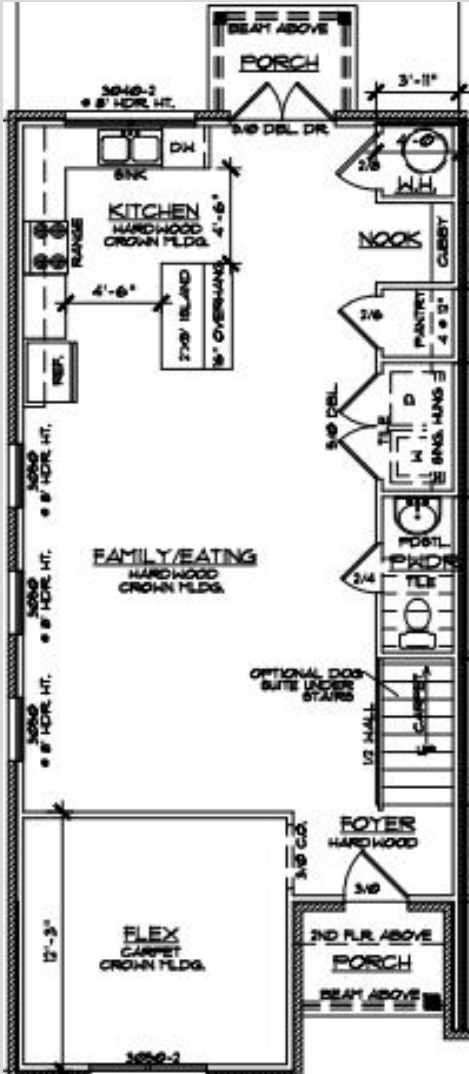
ELEVATION 2-C



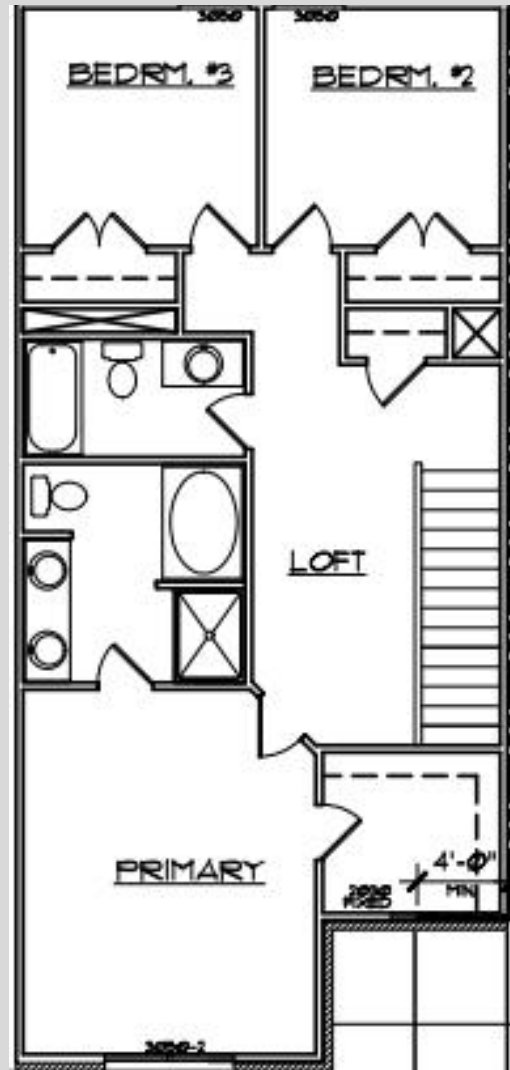
ELEVATION 2-D

# TERRACES CORNER HOMESITES

## LINE DRAWINGS



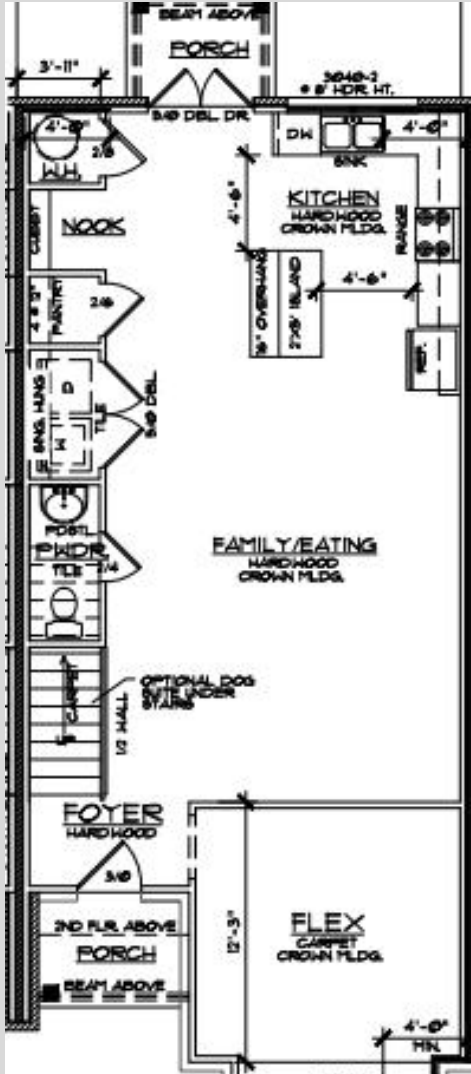
FIRST FLOOR



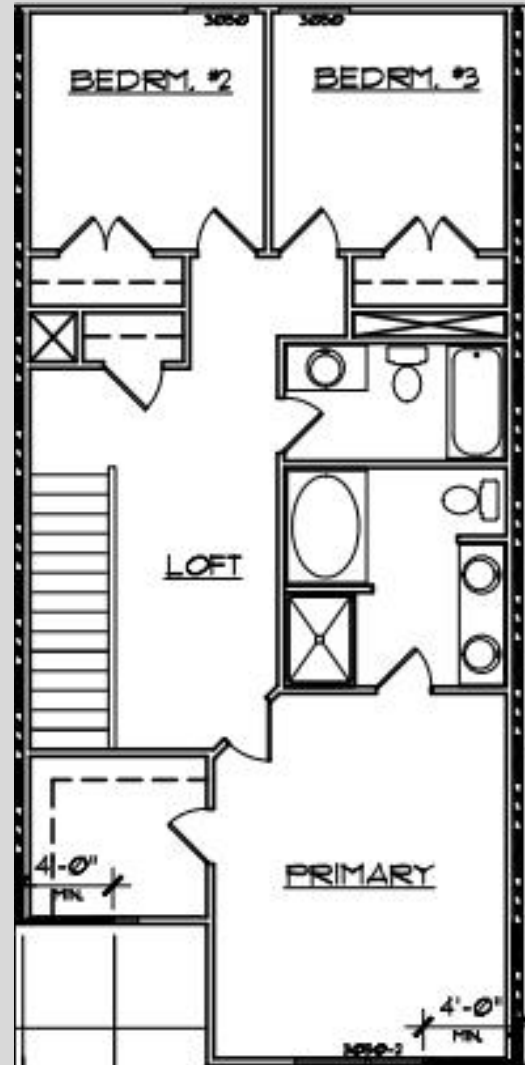
SECOND FLOOR

# TERRACES INTERIOR HOMESITES

## LINE DRAWINGS



FIRST FLOOR



SECOND FLOOR



# UPGRADE OPTIONS

We offer the following upgrades for our Townhome product. Don't see something? Reach out to get a custom quote!



- Add Garage
- Accent Walls
- Backsplash
- Cedar Beams
- Coffered Ceiling
- Custom Closets
- Custom Pantry
- Extend Back Porch
- Freestanding Tub
- Lighting Selection
- Paint Selection
- Quartz Countertops
- Tile Shower
- Upgrade Appliances
- Upgraded Flooring
- Upgraded Trim Packages
- Vaulted Primary Bedroom



# INCLUDED AMENITIES

We offer the following included amenities in each of our homes.



## Kitchen

- GE stainless steel appliances include a free-standing 30" range, dishwasher, and over-the-range microwave.
- Delta "Coranto Series" pull-down faucet multi-spray function featuring a lifetime guarantee.
- Granite countertops with durable stainless steel under-mount sink.
- Hand-laid tile backsplash.

## Master Bathroom

- Delta "Woodhurst" Series faucets featuring a lifetime guarantee.
- 36" "Gentlemen's Height" vanities.
- Easy to clean and long-lasting granite countertops.
- Luxurious shower with full height hinged shower door.
- Relaxing soaker tub.
- Walk-in primary closet.

## Flooring

- Durable RevWood floors are included in the Foyer, Kitchen, Family Room, Half-Bathroom, Laundry & Breakfast Nook.
- Ceramic tile with underlayment included in the Primary Bathroom and Guest Bathroom.
- Plush carpet with 6lb pad included in all bedrooms and the family room.

## Trim Carpentry and Moldings

- Our unique Murphy Homes Cubby™ with Wood Bench is included in every home we build!
- Crown molding included in the foyer, kitchen, breakfast nook, family room, flex/dining room, and master bedroom.
- Window & door casing included throughout the home.

# INCLUDED AMENITIES

We offer the following included amenities in each of our homes.



## Exterior Features

- Monolithic slab foundation.
- Siding used for exterior accents.
- Bermuda sod yard.
- Lush landscaping package.
- Home site is expertly graded.
- 30-year architectural shingles.
- Front and back covered porches.

## Energy Efficiency

- R-13 insulation in the walls.
- R-30 insulation in the ceiling.
- Murphy Homes Air Barrier™ air infiltration system in all homes to ensure your home is sealed tight against the elements.
- All Murphy Homes are “Blower Door” tested, and our ductwork is pressure tested to ensure <6% leakage.
- “Low-e” windows and doors.

## Community Features

- Lawn maintenance covered by the HOA

## Floor Plans

- Expertly Designed Floor Plan with our customers in mind.
- Plans feature opportunities for tray or coffered ceilings.
- Ability to work with Murphy Homes to customize floor plans to fit your family’s needs.





HOME PRICING SUBJECT TO CHANGE

256-772-8030